



HK

HONG KONG

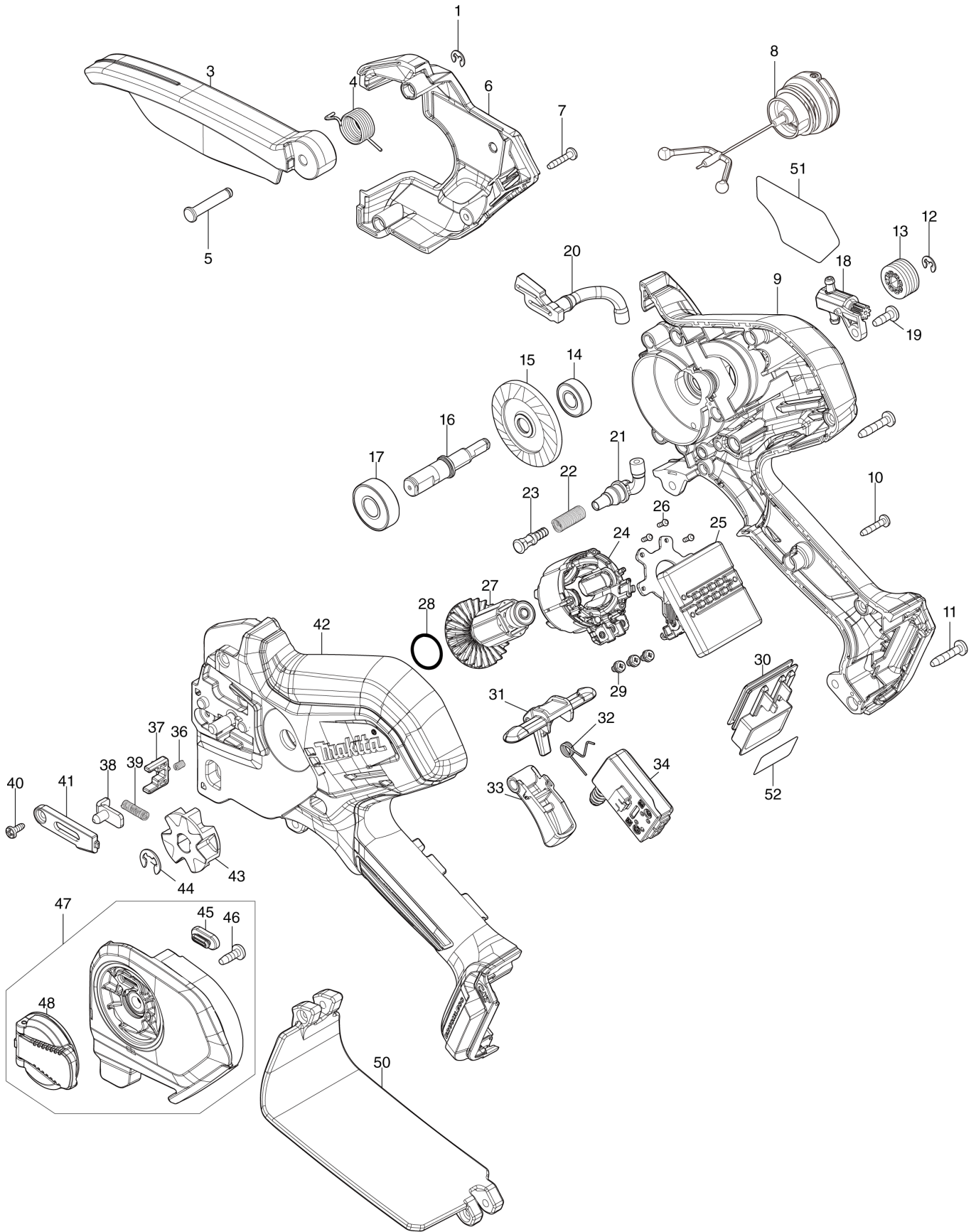
Diagram / Parts List

UC100D

100MM CORDLESS CHAIN SAW



(HK) UC100D / 100MM CORDLESS CHAIN SAW



HK

HONG KONG

UC100D / 100MM CORDLESS CHAIN SAW

Item	Sub	Parts No.	Parts Description	Qty	I/C	E/C No.	Close No.	Remark
001		961011-9	STOP RING E-4	1				
003		413M04-5	SAFETY COVER	1				
004		232785-2	TORSION SPRING 14	1				
005		256A31-5	SHOULDER PIN 5	1				
006		413L96-8	HOUSING R COVER	1				
007		266429-2	TAPPING SCREW 3X16	3				
008		126832-8	TANK CAP ASSEMBLY	1				
	C10	213894-6	O-RING 25	1				
009		183Y30-7	HOUSING SET	1				
	C10	263002-9	RUBBER PIN 4	2				
	C20	347A70-7	TANK GUARD	1				
	D10		INC. 42					
010		266429-2	TAPPING SCREW 3X16	10				
011		911138-5	P.H.SCREW M4X20 WITH WR	2				
012		961011-9	STOP RING E-4	1				
013		226884-0	WORM GEAR	1				
014		211166-3	BALL BEARING 698DDW	1				
015		227A17-6	SPIRAL BEVEL GEAR 53	1				
016		327A89-2	SPINDLE	1				
017		210059-1	BALL BEARING 6000DDW	1				
018		141N25-0	OIL PUMP COMPLETE	1				
019		266427-6	TAPPING SCREW 4X12	1				
020		422968-4	OIL TUBE 3-60	1				
021		422969-2	OIL TUBE 3-25	1				
022		232774-7	COMPRESSION SPRING 6	1				
023		413L02-3	NIPPLE	1				
024		629B91-0	STATOR	1				
025		620M05-8	CONTROLLER	1				
026		266490-9	TAPPING SCREW PT 2X6	3				
027		619791-8	ROTOR	1				
028		213A05-9	O-RING16	1				
029		652069-6	FLAT HEAD SCREW M3X6	3				
030		644813-5	TERMINAL	1				
031		413L98-4	LOCK OFF LEVER	1				
032		232784-4	TORSION SPRING 6	1				
033		413L97-6	SWITCH LEVER	1				
034		650033-1	SWITCH C3XA-3PSPM-1	1				
036		233211-4	COMPRESSION SPRING 2	1				
037		413M02-9	STOPPER	1				
038		347A69-2	TENSION SLIDE	1				
039		232787-8	COMPRESSION SPRING 4	1				
040		266492-5	TAPPING SCREW 3X8	1				
041		413M03-7	COVER	1				
042		183Y30-7	HOUSING SET	1				
	C10	263002-9	RUBBER PIN 4	2				
	C20	347A70-7	TANK GUARD	1				
	D10		INC. 9					
043		227947-5	SPROCKET 7	1				
044		961013-5	STOP RING E-7	1				
045		422970-7	GROMET	1				
046		266427-6	TAPPING SCREW 4X12	1				
047		136914-8	SPROCKET COVER ASS'Y	1				
	D10		INC. 45,46,48					
048		141M77-5	NUT COMPLETE	1				
050		141M76-7	REAR HAND GUARD COMPLETE	1				
	C10	8062G7-3	CAUTION LABEL	1				
051		8584L7-6	UC100D NAME PLATE	1				
052		8584M5-7	UC100D SERIAL NO. LABEL	1				
A01		1910W0-3	GUIDE BAR 4 SET	1				
A02		198457-8	CHAIN EDGER SET	1				
A03		199897-3	OIL VESSEL SET	1				
A04		413M40-1	GUIDE BAR CASE 125	1				
A05		1910V6-4	SAW CHAIN 4 SET	1				
A06Y		456128-6	BATTERY COVER	1				
A07Y		***DC10SB	DC10SB BATTERY CHARGER	1				

Y:UC100DSA(H)
Z:UC100DZ(N)

Interchange

O : Yes

X : No

< : the new part can be substituted for the current.

> : the current part can be substituted for the new.

S : Interchangeable as a set.

