



HK	HONG KONG
----	-----------

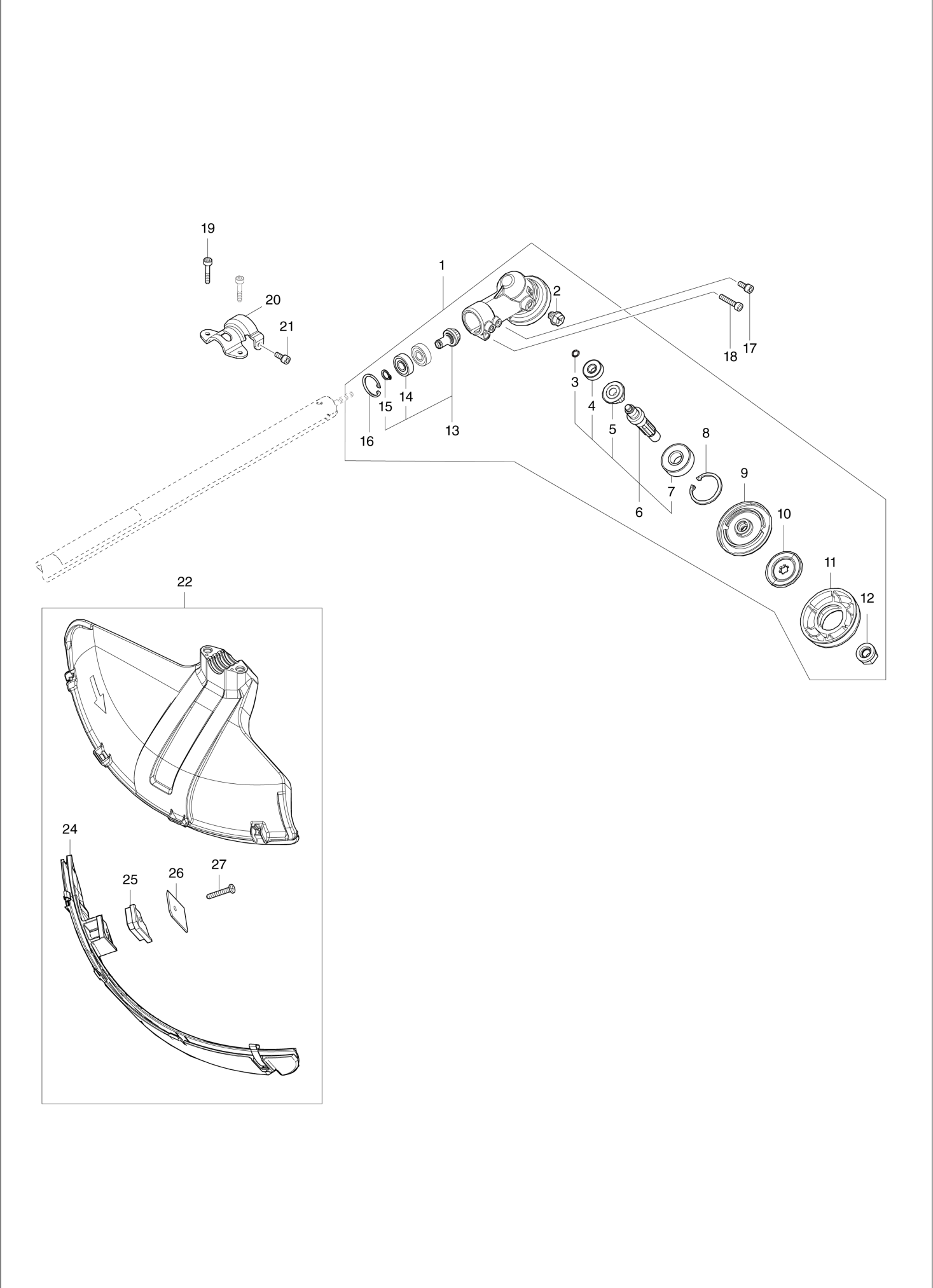
# Diagram / Parts List

**UR101C**

**BATTERY POWERED GRASS TRIMMER**



(HK) UR101C / BATTERY POWERED GRASS TRIMMER



(HK) UR101C / BATTERY POWERED GRASS TRIMMER



HK

HONG KONG

## UR101C / BATTERY POWERED GRASS TRIMMER

Item	Sub	Parts No.	Parts Description	Qty	I/C	E/C No.	Close No.	Remark
001		123853-1	GEAR CASE ASSEMBLY	1				
	D10		INC. 2,6,8-13,16					
002		265590-2	+HEX.BOLT M8X10 WITH R	1				
003		232350-7	RING SPRING 6	1				
004		210030-5	BALL BEARING 627ZZ	1				
005		221484-1	SPIRAL BEVEL GEAR 19	1				
006		136233-2	CUTTER SHAFT ASS'Y	1				
	D10		INC. 3-5,7					
007		211228-7	BALL BEARING 6202DDW	1				
008		257432-4	RETAINING RING R-35	1				
009		144312-2	RECEIVE WASHER COMPLETE	1				
010		347104-0	CLAMP WASHER	1				
011		457274-8	CUP US	1				
012		252236-9	HEX. LOCK NUT M10-17	1				
013		136235-8	SPIRAL BEVEL GEAR ASS'Y	1				
	D10		INC. 14,15					
014		210049-4	BALL BEARING 609ZZ	2				
015		257986-1	RETAINING RING (EXT) S-9	1				
016		257987-9	RETAINING RING (INT)R-24	1				
017		922216-6	H.S.H.BOLT M5X14 WITH W	1				
018		922242-5	HEX. SOCKET HEAD BOLT M5X25	1				
019		251513-6	H.S.H.BOLT M5X25	2				
020		347107-4	PROTECTOR CLAMP 24	1				
021		922216-6	H.S.H.BOLT M5X14 WITH W	1				
022		191B54-1	PROTECTOR U 430 SET MG	1				
	D10		INC. 24-27					
024		144316-4	PROTECTOR U EXT. 420-450 COMP	1				
	C10	346696-6	HOOK	2				
	C20	232284-4	LEAF SPRING	2				
025		459765-5	CUTTER EXTENSION	1				
026		347115-5	CUTTER	1				
027		266459-3	TAPPING SCREW 5X25	1				
028		140J61-9	HANDLE 22 COMPLETE	1				
029		168796-0	KNOB 57	1				
030		144313-0	UPPER HANDLE HOLDER COMPLETE	1				
	C10	263005-3	RUBBER PIN 6	1				
031		319517-5	LOWER HANDLE HOLDER	1				
032		233309-7	COMPRESSION SPRING 17	1				
033		319959-3	PIPE HOLDER	1				
034		318426-5	PIPE CLAMP	1				
035		922241-7	HEX. SOCKET HEAD BOLT M5X25	2				
036		140S82-5	SHAFT PIPE COMPLETE I	1				
	C10	819312-8	MAKITA LOGO LABEL	1				
	C20	819J22-7	CAUTION LABEL	1				
037		327056-1	SHAFT	1				
038		412305-0	PIPE HOLDER 24	1				
039		183L60-0	GRIP SET	1				
	C10	252180-0	HEX. LOCK NUT M5-8	1				
	D10		INC. 47					
040		140K37-2	INDICATION CIRCUIT COMPLETE E	1				
041		140W06-5	SWITCH CIRCUIT COMPLETE G	1				
	C10	819J26-9	SWITCH LABEL	1				
042		651436-2	SWITCH C3JW-1A-P-2	1				
043		233540-5	TORSION SPRING 11	1				
044		459145-5	SWITCH LEVER	1				
045		233101-1	COMPRESSION SPRING 4	1				
046		459146-3	LOCK OFF LEVER	1				
047		183L60-0	GRIP SET	1				
	C10	252180-0	HEX. LOCK NUT M5-8	1				
	D10		INC. 39					
048		699132-4	POWER SUPPLY CORD UNIT	1				
049		687260-7	STRAIN RELIEF	1				
050		266326-2	TAPPING SCREW 4X18	1				
051		266326-2	TAPPING SCREW 4X18	5				
052		911258-5	PAN HEAD SCREW M5X35	1				

Z:UR101CZ(N)

Interchange

O : Yes

X : No

&lt; : the new part can be substituted for the current.

&gt; : the current part can be substituted for the new.

S : Interchangeable as a set.

HK

HONG KONG

## UR101C / BATTERY POWERED GRASS TRIMMER

Item	Sub	Parts No.	Parts Description	Qty	I/C	E/C No.	Close No.	Remark
053		232589-2	TORSION SPRING 12	1				
054		183N86-4	CONNECTOR HOLDER SET	1				
	D10		INC. 57					
055		266511-7	+ FLAT FILLISTER HEAD SCREW M5	1				
056		699146-3	POWER SUPPLY CORD UNIT	1				
057		183N86-4	CONNECTOR HOLDER SET	1				
	D10		INC. 54					
058		266429-2	TAPPING SCREW 3X16	4				
059		922244-1	H.S.H.BOLT M5X25 WITH WG	1				
060		412302-6	CORD HOLDER	1				
061		457458-8	CLAMP	1				
062		457458-8	CLAMP	2				
063		319919-5	PIPE BRACKET	1				
064		911233-1	PAN HEAD SCREW M5X20	4				
065		263002-9	RUBBER PIN 4	1				
066		325811-5	SPINDLE HUB	1				
067		211131-2	BALL BEARING 6001DDW	1				
068		226931-7	HELICAL GEAR 29	1				
069		211150-8	BALL BEARING 6901ZZ	1				
070		266459-3	TAPPING SCREW 5X25	4				
071		136230-8	GEAR BOX ASS'Y	1				
	D10		INC. 72					
072		213961-7	O RING 22	1				
073		226932-5	HELICAL GEAR 10	1				
074		210005-4	BALL BEARING 608DDW	1				
075		519587-6	ROTOR ASS'Y	1				
	D10		INC. 73,74,76					
076		210062-2	BALL BEARING 607ZZ	1				
077		266326-2	TAPPING SCREW 4X18	2				
078		459764-7	BAFFLE PLATE	1				
079		266326-2	TAPPING SCREW 4X18	2				
080		687124-5	STRAIN RELIEF	1				
081		687051-6	STRAIN RELIEF	1				
082		183N25-4	HOUSING COVER SET	1				
	D10		INC. 91					
083		183N71-7	HOUSING SET	1				
	D10		INC. 95					
084		687149-9	STRAIN RELIEF	1				
085		266326-2	TAPPING SCREW 4X18	2				
086		459763-9	MOTOR HOUSING	1				
087		620C69-2	CONTROLLER	1				
088		629471-8	STATOR	1				
089		347620-2	PLATE	1				
090		911102-6	PAN HEAD SCREW M4X6	1				
091		183N25-4	HOUSING COVER SET	1				
	D10		INC. 82					
092		266326-2	TAPPING SCREW 4X18	2				
093		922211-6	H.S.H.BOLT M5X12 WITH W	1			DG506	
093-1		922216-6	H.S.H.BOLT M5X14 WITH W	1	O	DG506		
094		922233-6	H.S.H.BOLT M5X20 WITH WR	1				
095		183N71-7	HOUSING SET	1				
	D10		INC. 83					
096		266326-2	TAPPING SCREW 4X18	7				
097		856S03-4	UR101C NAME PLATE	1				
099		922211-6	H.S.H.BOLT M5X12 WITH W	1			Y08840	
100		922233-6	H.S.H.BOLT M5X20 WITH WR	1			Y08840	
A01		782238-6	BOX WRENCH 17	1				
A02		783202-0	HEX. WRENCH 4	1				
A03		197243-4	BAND ASSEMBLY SET	1				
A04		831304-7	ACCESSORY BAG	1				
A07		197993-1	TRIMMER HEAD 95-M10L SET ME	1				
	C10	456640-6	SPOOL HOLDER	1		Y08865		
	C20	232289-4	COMPRESSION SPRING 15	1		Y08865		
	C30	144259-0	SPOOL COVER COMPLETE	1		Y08865		
	C40	456642-2	SPOOL	1		Y08865		

Z:UR101CZ(N)

Interchange

O : Yes

X : No

&lt; : the new part can be substituted for the current.

&gt; : the current part can be substituted for the new.

S : Interchangeable as a set.

