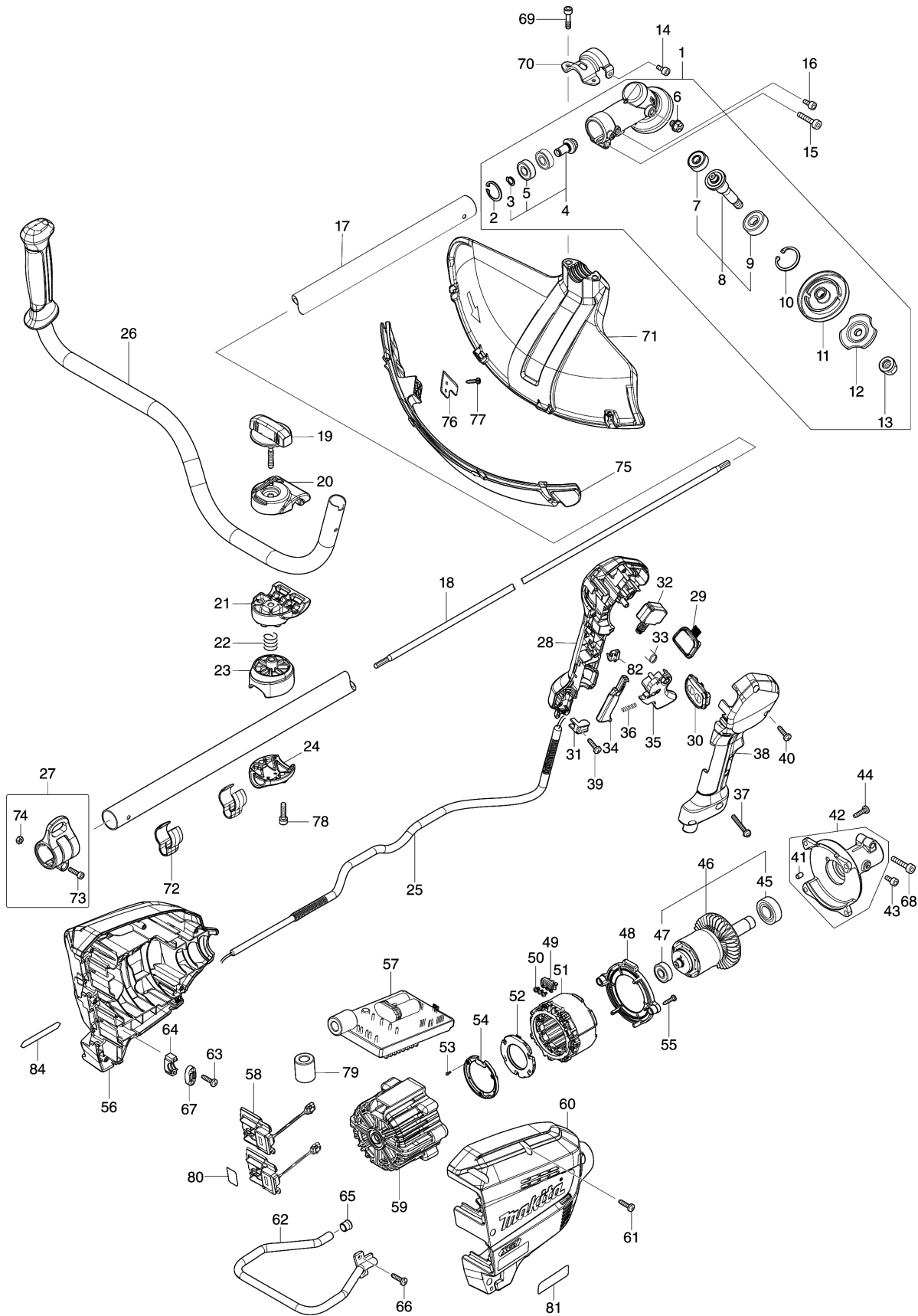


# Model No.UR012G CORDLESS GRASS TRIMMER





## Model No.UR012G CORDLESS GRASS TRIMMER

| Item | Parts No. | Description                  | I/C               | Qty | New/Old | Opt. 1 | Opt. 2 | Note |
|------|-----------|------------------------------|-------------------|-----|---------|--------|--------|------|
| 001  | 127238-3  | GEAR CASE ASSEMBLY G         |                   | 1   |         |        |        |      |
|      | D10       | INC. 2,4,6,8,10-13           |                   |     |         |        |        |      |
| 002  | 257470-6  | RETAINING RING (INT) R-26    |                   | 1   |         |        |        |      |
| 003  | 257471-4  | RETAINING RING (EXT) S-10    |                   | 1   |         |        |        |      |
| 004  | 136564-9  | SPIRAL BEVEL GEAR 13 ASS'Y   |                   | 1   |         |        |        |      |
|      | D10       | INC. 3,5                     |                   |     |         |        |        |      |
| 005  | 210067-2  | 球軸承6000ZZ - MT954            |                   | 2   |         |        |        |      |
| 006  | 265590-2  | +HEX.BOLT M8X10 WITH R       |                   | 1   |         |        |        |      |
| 007  | 210084-2  | 球軸承629ZZ - MT960             |                   | 1   |         |        |        |      |
| 008  | 136565-7  | CUTTER SHAFT G ASS'Y         |                   | 1   |         |        |        |      |
|      | D10       | INC. 7,9                     |                   |     |         |        |        |      |
| 009  | 211137-0  | 球軸承 6201LLU - 4140           |                   | 1   |         |        |        |      |
| 010  | 257469-1  | RETAINING RING (INT) R-32    |                   | 1   |         |        |        |      |
| 011  | 140J59-6  | RECEIVE WASHER COMPLETE G    |                   | 1   |         |        |        |      |
| 012  | 162567-7  | CLAMP WASHER COMPLETE G      |                   | 1   |         |        |        |      |
| 013  | 252236-9  | 六角鎖緊螺母M10-17 - EM404MP       |                   | 1   |         |        |        |      |
| 014  | 922211-6  | H.S.H.BOLT M5X12 WITH W      |                   | 1   |         |        |        |      |
| 015  | 922353-6  | HEX.SOCKET HEAD BOLT M6X30   |                   | 1   |         |        |        |      |
| 016  | 922211-6  | H.S.H.BOLT M5X12 WITH W      |                   | 1   |         |        |        |      |
| 017  | 141D74-7  | SHAFT PIPE COMPLETE A        |                   | 1   |         |        |        |      |
|      | C10       | 819312-8                     | MAKITA LOGO LABEL | 1   |         |        |        |      |
|      | C20       | 8040V7-0                     | CAUTION LABEL     | 1   |         |        |        |      |
| 018  | 327845-4  | SHAFT                        |                   | 1   |         |        |        |      |
| 019  | 168796-0  | KNOB 57                      |                   | 1   |         |        |        |      |
| 020  | 144313-0  | UPPER HANDLE HOLDER COMPLETE |                   | 1   |         |        |        |      |
|      | C10       | 263005-3                     | 橡膠銷6 - 2414B      | 1   |         |        |        |      |
| 021  | 319517-5  | LOWER HANDLE HOLDER          |                   | 1   |         |        |        |      |
| 022  | 233309-7  | 彈簧16 - HM1304                |                   | 1   |         |        |        |      |
| 023  | 319799-9  | PIPE HOLDER                  |                   | 1   |         |        |        |      |
| 024  | 318422-3  | PIPE CLAMP                   |                   | 1   |         |        |        |      |
| 025  | 699171-4  | POWER SUPPLY CORD UNIT       |                   | 1   |         |        |        |      |
| 026  | 140J61-9  | HANDLE 22 COMPLETE           |                   | 1   |         |        |        |      |
|      | C10       | 273014-4                     | GRIP 36           | 1   |         |        |        |      |
| 027  | 125558-9  | HANGER ASSEMBLY              |                   | 1   |         |        |        |      |
|      | D10       | INC. 73,74                   |                   |     |         |        |        |      |

Please order the parts with part number.

Print Date 15/12/2021

## Model No.UR012G CORDLESS GRASS TRIMMER

| Item  | Parts No. | Description                   | I/C | Qty | New/Old | Opt. 1 | Opt. 2 | Note |
|-------|-----------|-------------------------------|-----|-----|---------|--------|--------|------|
| 028   | 183T68-2  | GRIP SET                      |     | 1   |         |        |        |      |
| C10   | 252180-0  | HEX. LOCK NUT M5-8            |     | 1   |         |        |        |      |
| D10   |           | INC. 38                       |     |     |         |        |        |      |
| 029   | 141D25-0  | INDICATION CIRCUIT COMPLETE E |     | 1   |         |        |        |      |
| 030   | 140W06-5  | SWITCH CIRCUIT COMPLETE G     |     | 1   |         |        |        |      |
| C10   | 819J26-9  | SWITCH LABEL                  |     | 1   |         |        |        |      |
| 031   | 687260-7  | 軟線夾 - HR2470                  |     | 1   |         |        |        |      |
| 032   | 651492-2  | SWITCH C3JR-1A-PAXD3          |     | 1   |         |        |        |      |
| 033   | 233540-5  | TORSION SPRING 11             |     | 1   |         |        |        |      |
| 034   | 459146-3  | LOCK OFF LEVER                |     | 1   |         |        |        |      |
| 035   | 459145-5  | SWITCH LEVER                  |     | 1   |         |        |        |      |
| 036   | 233101-1  | COMPRESSION SPRING 4          |     | 1   |         |        |        |      |
| 037   | 911258-5  | 盤頭螺絲M5X35 - 2414NB            |     | 1   |         |        |        |      |
| 038   | 183T68-2  | GRIP SET                      |     | 1   |         |        |        |      |
| C10   | 252180-0  | HEX. LOCK NUT M5-8            |     | 1   |         |        |        |      |
| D10   |           | INC. 28                       |     |     |         |        |        |      |
| 039   | 266326-2  | 自攻螺釘4X18 - HR2810             |     | 1   |         |        |        |      |
| 040   | 266326-2  | 自攻螺釘4X18 - HR2810             |     | 5   |         |        |        |      |
| 041   | 263005-3  | 橡膠銷6 - 2414B                  |     | 1   |         |        |        |      |
| 042   | 136465-1  | PIPE BRACKET ASSEMBLY         |     | 1   |         |        |        |      |
| D10   |           | INC. 41                       |     |     |         |        |        |      |
| 043   | 922211-6  | H.S.H.BOLT M5X12 WITH W       |     | 1   |         |        |        |      |
| 044   | 266420-0  | 自攻螺絲5X20 - HR2810             |     | 4   |         |        |        |      |
| 045   | 211275-8  | 球軸承6003DDW - 3620             |     | 1   |         |        |        |      |
| 046   | 519560-6  | ROTOR ASS'Y                   |     | 1   | *       |        |        |      |
| D10   |           | IMC. 45,47                    |     |     | *       |        |        |      |
| 046-1 | 519560-6  | ROTOR ASS'Y                   | ○   | 1   |         |        |        |      |
| D10   |           | IMC. 45,47                    |     |     |         |        |        |      |
| 047   | 210059-1  | 球軸承 6000DDW - GA5021C         |     | 1   |         |        |        |      |
| 048   | 459144-7  | BAFFLE PLATE                  |     | 1   |         |        |        |      |
| 049   | 632T09-0  | LEAD UNIT                     |     | 1   |         |        |        |      |
| 050   | 652031-1  | PAN HEAD SCREW M3X6           |     | 3   |         |        |        |      |
| 051   | 629A82-5  | STATOR                        |     | 1   |         |        |        |      |
| 052   | 620F36-5  | CONTROLLER B                  |     | 1   |         |        |        |      |
| 053   | 266490-9  | TAPPING SCREW PT 2X6          |     | 3   |         |        |        |      |
| 054   | 687B69-9  | STOPPER                       |     | 1   |         |        |        |      |
| 055   | 266326-2  | 自攻螺釘4X18 - HR2810             |     | 2   |         |        |        |      |
| 056   | 183T69-0  | HOUSING SET                   |     | 1   |         |        |        |      |
| C10   | 263005-3  | 橡膠銷6 - 2414B                  |     | 4   |         |        |        |      |

Please order the parts with part number.

Print Date 15/12/2021

## Model No.UR012G CORDLESS GRASS TRIMMER

| Item | Parts No. | Description                    | I/C | Qty | New/Old | Opt. 1 | Opt. 2 | Note |
|------|-----------|--------------------------------|-----|-----|---------|--------|--------|------|
| D10  |           | INC. 60                        |     |     |         |        |        |      |
| 057  | 620F33-1  | CONTROLLER                     |     | 1   |         |        |        |      |
| 058  | 632P49-4  | TERMINAL UNIT                  |     | 2   |         |        |        |      |
| 059  | 459143-9  | MOTOR HOUSING                  |     | 1   |         |        |        |      |
| 060  | 183T69-0  | HOUSING SET                    |     | 1   |         |        |        |      |
| C10  | 263005-3  | 橡膠銷6 - 2414B                   |     | 4   |         |        |        |      |
| D10  |           | INC. 56                        |     |     |         |        |        |      |
| 061  | 266326-2  | 自攻螺釘4X18 - HR2810              |     | 6   |         |        |        |      |
| 062  | 347846-6  | BATTERY GUARD                  |     | 1   |         |        |        |      |
| 063  | 266326-2  | 自攻螺釘4X18 - HR2810              |     | 2   |         |        |        |      |
| 064  | 687051-6  | 軟線壓板 - 3600HA                  |     | 1   |         |        |        |      |
| 065  | 422230-7  | CAP                            |     | 1   |         |        |        |      |
| 066  | 266420-0  | 自攻螺絲5X20 - HR2810              |     | 2   |         |        |        |      |
| 067  | 687052-4  | 軟線壓板 - 2414B                   |     | 1   |         |        |        |      |
| 068  | 922353-6  | HEX.SOCKET HEAD BOLT<br>M6X30  |     | 1   |         |        |        |      |
| 069  | 266280-0  | 內六角頭螺栓 M6X25 -<br>EM2654LH     |     | 2   |         |        |        |      |
| 070  | 347494-1  | PROTECTOR CLAMP28              |     | 1   |         |        |        |      |
| 071  | 459147-1  | PROTECTOR 480                  |     | 1   |         |        |        |      |
| 072  | 455588-9  | WIRE CLAMP                     |     | 2   |         |        |        |      |
| 073  | 266698-5  | HEX. SOCKET HEAD BOLT<br>M5X20 |     | 1   |         |        |        |      |
| 074  | 264086-0  | HEX.NUT M5                     |     | 1   |         |        |        |      |
| 075  | 141D72-1  | PROTECTOR EXT. 480<br>COMPLETE |     | 1   |         |        |        |      |
| 076  | 347493-3  | CUTTER                         |     | 1   |         |        |        |      |
| 077  | 266326-2  | 自攻螺釘4X18 - HR2810              |     | 2   |         |        |        |      |
| 078  | 922341-3  | 內六角頭螺栓M6X25                    |     | 2   |         |        |        |      |
| 079  | 688140-0  | LINE FILTER                    |     | 1   |         |        |        |      |
| 080  | 811X20-1  | UR012G SERIAL NO. LABEL        |     | 1   |         |        |        |      |
| 081  | 811X59-4  | UR012G NAME PLATE              |     | 1   |         |        |        |      |
| 082  | 632G61-0  | SWITCH UNIT                    |     | 1   |         |        |        |      |
| 084  | 8040V4-6  | XGT LOGO LABEL                 |     | 1   |         |        |        |      |
| A01  | 122A37-4  | BAND ASSEMBLY                  |     | 1   |         |        |        |      |
| A02  | 195246-2  | SAFETY GOGGLE                  |     | 1   |         |        |        |      |
| A03  | 195624-6  | CUTTER BLADE 305 SET           |     | 1   |         |        |        |      |
| A05  | 782238-6  | BOX WRENCH 17                  |     | 1   |         |        |        |      |
| A06  | 783202-0  | 六角扳手4 - AN5010                 |     | 1   |         |        |        |      |
| A07  | 783217-7  | 六角扳手5 - MT411                  |     | 1   |         |        |        |      |
| A08  | 831304-7  | ACCESSORY BAG                  |     | 1   |         |        |        |      |
| A09  | 199884-2  | 割草頭105-M10L - DUR640           |     | 1   |         |        |        |      |

Please order the parts with part number.

Print Date 15/12/2021

## Model No.UR012G CORDLESS GRASS TRIMMER

| Item | Parts No. | Description          | I/C | Qty | New/Old | Opt. 1 | Opt. 2 | Note |
|------|-----------|----------------------|-----|-----|---------|--------|--------|------|
| A10  | 199868-0  | 刀片305 - DUR640       |     | 1   |         |        |        |      |
| C10  | 140J62-7  | BLADE BASE COMPLETE  |     | 1   |         |        |        |      |
| C20  | 326958-8  | HOLDER M10L          |     | 1   |         |        |        |      |
| C30  | 459154-4  | BLADE BASE COVER     |     | 1   |         |        |        |      |
| C40  | 199870-3  | 替換刀片305(3片) - DUR640 |     | 1   |         |        |        |      |
| A11  | 422818-3  | BLADE COVER          |     | 2   |         |        |        |      |
| E01  | 807949-3  | SOUND 94DB LABEL     |     | 1   |         |        |        |      |

Please order the parts with part number.

Print Date 15/12/2021