



HK	HONG KONG
----	-----------

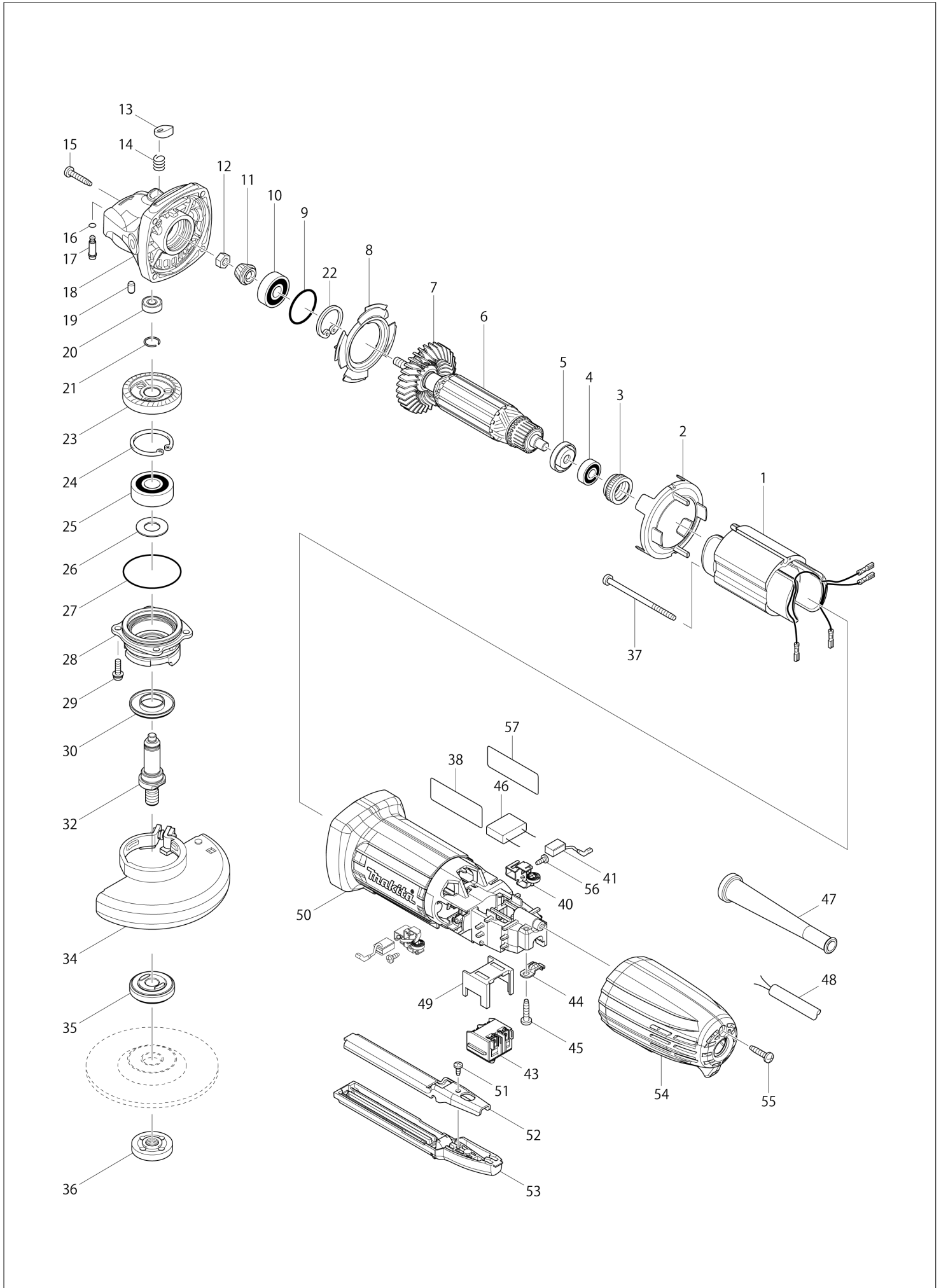
Diagram / Parts List

GA4034

100MM ANGLE GRINDER



(HK) GA4034 / 100MM ANGLE GRINDER



HK

HONG KONG

GA4034 / 100MM ANGLE GRINDER

Item	Sub	Parts No.	Parts Description	Qty	I/C	E/C No.	Close No.	Remark
001A		623533-4	FIELD 220-240V	1			A1657	220V
001B		623531-8	FIELD 115V	1			A1657	110V
001-1A		635113-4	FIELD 220-240V	1	O	A1657		220V
001-1B		635111-8	FIELD 115V	1	O	A1657		110V
001-1Y		635113-4	FIELD 220-240V	1				220V
001-1Z		635111-8	FIELD 115V	1				110V
002		450796-7	BAFFLE PLATE	1				
003A		421868-5	LABYRINTH RUBBER RING 19	1			DD769	
003B		421868-5	LABYRINTH RUBBER RING 19	1			DD769	
003Z		421868-5	LABYRINTH RUBBER RING 19	1			DD769	
003-1A		422768-2	LABYRINTH RUBBER RING19	1	<	DD769		
003-1B		422768-2	LABYRINTH RUBBER RING19	1	<	DD769		
003-1Y		422768-2	LABYRINTH RUBBER RING19	1				
003-1Z		422768-2	LABYRINTH RUBBER RING19	1	<	DD769		
004		210034-7	BALL BEARING 607LLB	1				
005		681636-0	INSULATION WASHER	1				
006A		518559-8	ARMATURE ASS'Y 220V	1			DC296	220V
	D10		INC. 4,5,7				DC296	
006B		517646-0	ARMATURE ASS'Y 115V	1				110V
	D10		INC. 4,5,7					
006Z		517646-0	ARMATURE ASS'Y 115V	1				110V
	D10		INC. 4,5,7					
006-1A		517648-6	ARMATURE ASS'Y 220V	1	O	DC296		220V
	D10		INC. 4,5,7			DC296		
006-1Y		517648-6	ARMATURE ASS'Y 220V	1				220V
	D10		INC. 4,5,7					
007A		240107-2	FAN 56	1			97304	
007B		240107-2	FAN 56	1			97304	
007-1A		240139-9	FAN 56	1	O	97304		
007-1B		240139-9	FAN 56	1	O	97304		
007-1Y		240139-9	FAN 56	1				
007-1Z		240139-9	FAN 56	1				
008		413126-3	GUIDE PLATE	1				
009		213445-5	O-RING 26	1				
010		211092-6	BALL BEARING 629DDW	1				
011A		227545-5	SPIRAL BEVEL GEAR 10	1			DJ258	
011B		227545-5	SPIRAL BEVEL GEAR 10	1			DJ258	
011Z		227545-5	SPIRAL BEVEL GEAR 10	1			DJ258	
011-1A		227545-5	SPIRAL BEVEL GEAR 10	1	S	DJ258		
011-1B		227545-5	SPIRAL BEVEL GEAR 10	1	S	DJ258		
011-1Y		227545-5	SPIRAL BEVEL GEAR 10	1				
011-1Z		227545-5	SPIRAL BEVEL GEAR 10	1	S	DJ258		
012		252186-8	HEX. NUT M6	1				
013		417771-6	PIN CAP	1				
014		234057-1	COMPRESSION SPRING 8	1				
015		266324-6	TAPPING SCREW 4X22	4				
016		213032-0	O RING 4	1			DU993	
016-1		213960-9	O RING 5	1	O	DU993		
017		256510-7	SHOULDER PIN 4	1				
018		318335-8	GEAR HOUSING	1				
019		263002-9	RUBBER PIN 4	1				
020		210033-9	BALL BEARING 696ZZ	1				
021		233950-6	RING SPRING 11	1				
022		962105-3	RETAINING RING R-26	1				
023A		227546-3	SPIRAL BEVEL GEAR 37	1			DJ258	
023B		227546-3	SPIRAL BEVEL GEAR 37	1			DJ258	
023Z		227546-3	SPIRAL BEVEL GEAR 37	1			DJ258	
023-1A		227546-3	SPIRAL BEVEL GEAR 37	1	S	DJ258		
023-1B		227546-3	SPIRAL BEVEL GEAR 37	1	S	DJ258		
023-1Y		227546-3	SPIRAL BEVEL GEAR 37	1				
023-1Z		227546-3	SPIRAL BEVEL GEAR 37	1	S	DJ258		
024		962151-6	RETAINING RING R-32	1				
025		211129-9	BALL BEARING 6201DDW	1				
026A		267113-2	FLAT WASHER 12	1			D7262	
026B		267113-2	FLAT WASHER 12	1			D7262	

A:GA4034(H)
B:GA4034(L)
Y:GA4034(H)
Z:GA4034(L)

Interchange

O : Yes

X : No

< : the new part can be substituted for the current.

> : the current part can be substituted for the new.

S : Interchangeable as a set.

HK

HONG KONG

GA4034 / 100MM ANGLE GRINDER

Item	Sub	Parts No.	Parts Description	Qty	I/C	E/C No.	Close No.	Remark
026Z		267113-2	FLAT WASHER 12	1			D7262	
026-1A		267238-2	FLAT WASHER 12	1	O	D7262		
026-1B		267238-2	FLAT WASHER 12	1	O	D7262		
026-1Y		267238-2	FLAT WASHER 12	1				
026-1Z		267238-2	FLAT WASHER 12	1	O	D7262		
027		213561-3	O RING 42	1				
028		318336-6	BEARING BOX	1				
029		265099-4	PAN HEAD SCREW M4X14	4				
030		345464-4	LABYRINTH RING	1				
032		324956-6	SPINDLE	1				
034A		122885-5	WHEEL COVER 100K ASS'Y	1			98940	
	C10	213009-5	O RING 4	1			98940	
	C20	265180-1	PAN HEAD SCREW M5X16	1			98940	
034B		122885-5	WHEEL COVER 100K ASS'Y	1			98940	
	C10	213009-5	O RING 4	1			98940	
	C20	265180-1	PAN HEAD SCREW M5X16	1			98940	
034-1A		125885-4	WHEEL COVER 100AK ASS'Y	1	<	98940	DC806	
	C10	213009-5	O RING 4	1		98940	DC806	
	C20	265180-1	PAN HEAD SCREW M5X16	1		98940	DC806	
034-1B		125885-4	WHEEL COVER 100AK ASS'Y	1	<	98940	DC806	
	C10	213009-5	O RING 4	1		98940	DC806	
	C20	265180-1	PAN HEAD SCREW M5X16	1		98940	DC806	
034-1Z		125885-4	WHEEL COVER 100AK ASS'Y	1			DC806	
	C10	213009-5	O RING 4	1			DC806	
	C20	265180-1	PAN HEAD SCREW M5X16	1			DC806	
034-2A		122B50-8	WHEEL COVER 100AK ASSEMBLY	1	<	DC806		
	C10	213009-5	O RING 4	1		DC806	DS662	
	C20	265180-1	PAN HEAD SCREW M5X16	1		DC806		
034-2B		122B50-8	WHEEL COVER 100AK ASSEMBLY	1	<	DC806		
	C10	213009-5	O RING 4	1		DC806	DS662	
	C20	265180-1	PAN HEAD SCREW M5X16	1		DC806		
034-2Y		141P26-0	WHEEL COVER 100AK COMPLETE	1				
	C10	213009-5	O RING 4	1			DS662	
	C20	265180-1	PAN HEAD SCREW M5X16	1				
	C30	8050A1-8	CAUTION LABEL	1				
034-2Z		122B50-8	WHEEL COVER 100AK ASSEMBLY	1	<	DC806	DK899	
	C10	213009-5	O RING 4	1		DC806	DK899	
	C20	265180-1	PAN HEAD SCREW M5X16	1		DC806	DK899	
034-3Z		141P26-0	WHEEL COVER 100AK COMPLETE	1	<	DK899		
	C10	213009-5	O RING 4	1		DK899	DS662	
	C20	265180-1	PAN HEAD SCREW M5X16	1		DK899		
	C30	8050A1-8	CAUTION LABEL	1		DK899		
035		224314-5	INNER FLANGE 30	1			DW544	
035-1		224491-3	INNER FLANGE 29	1	O	DW544		
036		224559-5	LOCK NUT 10-30	1			DU086	
036-1		224610-1	LOCK NUT 10-29	1	O	DU086		
037		266325-4	TAPPING SCREW 4X70	2				
038		867608-1	GA4034 NAME PLATE	1			DK344	
038-1		8588X4-0	GA4034 NAME PLATE	1	<	DK344		
040		643839-4	BRUSH HOLDER 6X9	2				
041		194722-3	CARBON BRUSH CB-459	1			Y09297	
041-1		195026-6	CARBON BRUSH SET CB-459	1	O	Y09297		
043		650621-4	SWITCH PS10	1				
044A		687681-3	STRAIN RELIEF	1				
044B		687681-3	STRAIN RELIEF	1				
044Y		687681-3	STRAIN RELIEF	1				
044Z		687682-1	STRAIN RELIEF	1				
045		266326-2	TAPPING SCREW 4X18	1				
046Y		645200-1	NOISE SUPPRESSOR	1				
046Z		645200-1	NOISE SUPPRESSOR	1				
047A		682559-5	CORD GUARD 8	1				
047B		682559-5	CORD GUARD 8	1				
047Y		682559-5	CORD GUARD 8	1				
047Z		682566-8	CORD GUARD 10	1				
048A		692021-2	POWER SUPPLY CORD 1.0-2-2.5	1				220V

A:GA4034(H)
B:GA4034(L)
Y:GA4034(H)
Z:GA4034(L)

Interchange
O : Yes
X : No
< : the new part can be substituted for the current.
> : the current part can be substituted for the new.
S : Interchangeable as a set.

