



HK	HONG KONG
----	-----------

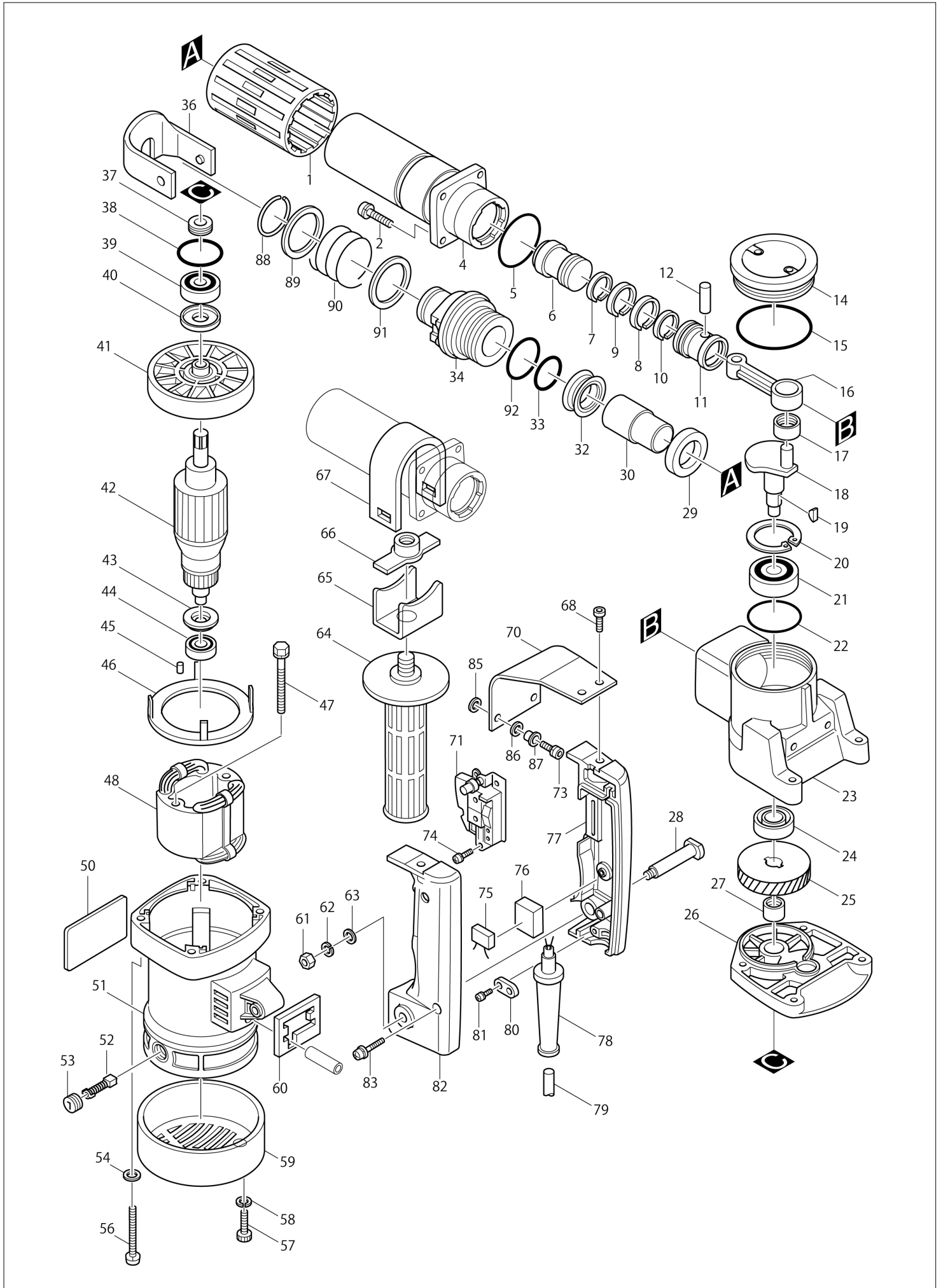
# Diagram / Parts List

**HM0810**

**DEMOLITION HAMMER**



(HK) HM0810 / DEMOLITION HAMMER



HK

HONG KONG

## HM0810 / DEMOLITION HAMMER

Item	Sub	Parts No.	Parts Description	Qty	I/C	E/C No.	Close No.	Remark
001A		421196-8	BARREL COVER	1				
001B		421196-8	BARREL COVER	1				
001-1A		421541-7	BARREL COVER	1	X	51098	D8690	
001-1B		421541-7	BARREL COVER	1	X	51098	D8690	
001-1Y		421541-7	BARREL COVER	1			D8690	
001-1Z		421541-7	BARREL COVER	1			D8690	
001-2		421541-7	BARREL COVER	1	O	D8690		
002-1		922341-3	HEX. SOCKET HEAD BOLT M6X25	4				
004-1A		151413-9	BARREL COMPLETE	1				
004-1B		151413-9	BARREL COMPLETE	1				
004-2A		151457-9	BARREL COMPLETE	1	S	51098		
004-2B		151457-9	BARREL COMPLETE	1	S	51098		
004-2Y		151457-9	BARREL COMPLETE	1				
004-2Z		151457-9	BARREL COMPLETE	1				
005		213554-0	O RING 44	1				
006		321929-0	STRIKER	1				
007		412073-5	INNER RING 26	1				
008		412053-1	PISTON RING 30	1				
009		412053-1	PISTON RING 30	1				
010		321514-9	INNER RING 26	1				
011		321958-3	PISTON	1				
012		256165-8	PIN 8	1				
013A		813002-5	MAKITA LABEL	1				
013B		813002-5	MAKITA LABEL	1				
014E		150368-5	CRANK CAP COMPLETE	1				
	C10	810712-5	CAUTION LABEL	1				
015		213654-6	O RING 60	1				
016		312956-8	ROD	1				
017		212108-0	NEEDLE BEARING 1212	1				
018		321954-1	CRANK SHAFT	1				
019		254001-2	WOODRUFF KEY 4	2				
020		962203-3	RETAINING RING R-47	1				
021A		211264-3	BALL BEARING 6303	1				
021B		211264-3	BALL BEARING 6303	1				
021-1A		211279-0	BALL BEARING 6303LLU	1	O	49203		
021-1B		211279-0	BALL BEARING 6303LLU	1	O	49203		
021-1Y		211279-0	BALL BEARING 6303LLU	1				
021-1Z		211279-0	BALL BEARING 6303LLU	1				
022		213606-7	O RING 48	1				
023-1		157627-8	CRANK HOUSING COMPLETE	1				
	D10		INC. 22					
024		213260-7	OIL SEAL 17	1				
025		221669-9	HELICAL GEAR 41	1				
026		157628-6	GEAR HOUSING	1				
	D10		INC. 38					
027		212102-2	NEEDLE BEARING 1210	1				
028		321210-9	HANDLE SHAFT	1				
029		253955-0	FLAT WASHER 24	1				
030		321495-7	IMPACT BOLT	1				
032-1A		213420-1	X RING 28	1				
032-1B		213420-1	X RING 28	1				
032-2A		213428-5	X RING 28	1	X	49793		
032-2B		213428-5	X RING 28	1	X	49793		
032-2Y		213428-5	X RING 28	1				
032-2Z		213428-5	X RING 28	1				
033		213411-2	O RING 27	1				
034-3A		322594-8	TOOL HOLDER	1				
034-3B		322594-8	TOOL HOLDER	1				
034-4A		193003-2	TOOL HOLDER SET	1	X	58814	63491	
	D10		INC. 92,93				63491	
034-4B		193003-2	TOOL HOLDER SET	1	X	58814	63491	
	D10		INC. 92,93				63491	
034-5A		193003-2	TOOL HOLDER SET	1	X	63491		
	D10		INC. 92,93			63491		
034-5B		193003-2	TOOL HOLDER SET	1	X	63491		

A:HM0810(H)  
B:HM0810(L)  
Y:HM0810CE(H)  
Z:HM0810(L)

Interchange  
O : Yes  
X : No  
< : the new part can be substituted for the current.  
> : the current part can be substituted for the new.  
S : Interchangeable as a set.

HK

HONG KONG

## HM0810 / DEMOLITION HAMMER

Item	Sub	Parts No.	Parts Description	Qty	I/C	E/C No.	Close No.	Remark
	D10		INC. 92,93			63491		
034-5Y		193003-2	TOOL HOLDER SET	1				
	D10		INC. 92,93					
034-5Z		193003-2	TOOL HOLDER SET	1				
	D10		INC. 92,93					
036-3A		165047-2	TOOL RETAINER	1				
036-3B		165047-2	TOOL RETAINER	1				
036-4A		165071-5	TOOL RETAINER	1	X	45912		
036-4B		165071-5	TOOL RETAINER	1	X	45912		
036-4Y		165071-5	TOOL RETAINER	1				
036-4Z		165071-5	TOOL RETAINER	1				
037		331194-3	SEAL	1				
038		213459-4	O RING 32	1				
039A		211106-1	BALL BEARING 6201LLB	1			65069	
039B		211106-1	BALL BEARING 6201LLB	1			65069	
039-1A		211144-3	BALL BEARING 6201LLB	1	O	65069	82574	
039-1B		211144-3	BALL BEARING 6201LLB	1	O	65069	82574	
039-2A		211106-1	BALL BEARING 6201LLB	1	O	82574		
039-2B		211106-1	BALL BEARING 6201LLB	1	O	82574		
039-2Y		211106-1	BALL BEARING 6201LLB	1				
039-2Z		211106-1	BALL BEARING 6201LLB	1				
040		213102-5	DUST SEAL 12	1				
041		241827-1	FAN 82	1				
042A1B		516146-7	ARMATURE ASS'Y 115V	1			75769	115V
	D10		INC. 39-41,43,44				75769	
042A2B		516146-7	ARMATURE ASS'Y 115V	1	O	75769		115V
	D10		INC. 39-41,43,44			75769		
042A2Z		516145-9	ARMATURE ASS'Y 100V	1				
	D10		INC. 39-41,43,44					
042B1A		516147-5	ARMATURE ASS'Y 200V	1			75769	220V
	D10		INC. 39-41,43,44				75769	
042B2A		516147-5	ARMATURE ASS'Y 200V	1	O	75769		220V
	D10		INC. 39-41,43,44			75769		
042B2Y		516148-3	ARMATURE ASS'Y 220V	1				220V
	D10		INC. 39-41,43,44					
043		681625-5	INSULATION WASHER	1				
044		211031-6	BALL BEARING 608LLB	1				
045A		263014-2	RUBBER PIN 4	1			A3973	
045B		263014-2	RUBBER PIN 4	1			A3973	
045-1A		263002-9	RUBBER PIN 4	1	O	A3973		
045-1B		263002-9	RUBBER PIN 4	1	O	A3973		
045-1Y		263002-9	RUBBER PIN 4	1				
045-1Z		263002-9	RUBBER PIN 4	1				
046		410509-8	BAFFLE PLATE	1				
047-2		265345-5	+ HEX. BOLT M5X60	2				
048A B		522506-3	FIELD ASS'Y 115V	1				115V
	C10	654019-7	RING TERMINAL	2				
	C20	654501-6	CONNECTOR P-1.25	2			DE676	
	C21	654485-8	PARALLEL SPLICE	2	O	DE676		
048A Z		522506-3	FIELD ASS'Y 115V	1				
	C10	654019-7	RING TERMINAL	2				
	C20	654501-6	CONNECTOR P-1.25	2				
048B A		522507-1	FIELD ASS'Y 200V	1				220V
	C10	654019-7	RING TERMINAL	2				
	C20	654501-6	CONNECTOR P-1.25	2			DE676	
	C21	654485-8	PARALLEL SPLICE	2	O	DE676		
048B Y		528796-6	FIELD ASS'Y 220V	1				220V
	C10	654019-7	RING TERMINAL	2				
	C20	654501-6	CONNECTOR P-1.25	2				
050A		855553-2	NAME PLATE HM0810	1			Z18726	
050B		855553-2	NAME PLATE HM0810	1			Z18726	
050-1A		897955-6	NAME PLATE HM0810	1	<	Z18726		
050-1B		897955-6	NAME PLATE HM0810	1	<	Z18726		
050-1Y		897955-6	NAME PLATE HM0810	1				
050-1Z		897955-6	NAME PLATE HM0810	1				

A:HM0810(H)  
B:HM0810(L)  
Y:HM0810CE(H)  
Z:HM0810(L)

Interchange  
O : Yes  
X : No  
< : the new part can be substituted for the current.  
> : the current part can be substituted for the new.  
S : Interchangeable as a set.

HK

HONG KONG

## HM0810 / DEMOLITION HAMMER

Item	Sub	Parts No.	Parts Description	Qty	I/C	E/C No.	Close No.	Remark
051A		157629-4	MOTOR HOUSING	1				
	C10	643603-3	BRUSH HOLDER 6-10	2				
	D10		INC. 45					
051B		157629-4	MOTOR HOUSING	1				
	C10	643603-3	BRUSH HOLDER 6-10	2				
	D10		INC. 45					
051-1A		159634-7	MOTOR HOUSING	1	S	44730		
051-1B		159634-7	MOTOR HOUSING	1	S	44730		
051-1Y		159634-7	MOTOR HOUSING	1				
051-1Z		159634-7	MOTOR HOUSING	1				
	C10	643603-3	BRUSH HOLDER 6-10	2				
	D10		INC. 45					
052		181038-5	A.C. CARBON BRUSH CB-105	1				
053		643600-9	BRUSH HOLDER CAP 6-10	2				
054A		941151-9	FLAT WASHER 6	4			A3776	
054B		941151-9	FLAT WASHER 6	4			A3776	
056-1A		922371-4	HEX. SOCKET HEAD BOLT M6X50	4			A3776	
056-1B		922371-4	HEX. SOCKET HEAD BOLT M6X50	4			A3776	
056-2A		922374-8	H.S.H.BOLT M6X50 WITH WG	4	S	A3776		
056-2B		922374-8	H.S.H.BOLT M6X50 WITH WG	4	S	A3776		
056-2Y		922374-8	H.S.H.BOLT M6X50 WITH WG	4				
056-2Z		922374-8	H.S.H.BOLT M6X50 WITH WG	4				
057-3		922226-3	HEX. SOCKET HEAD BOLT M5X18	2				
058-1A		942101-7	SPRING WASHER 5	2				
058-1B		942101-7	SPRING WASHER 5	2				
059		284059-7	REAR COVER	1				
060A		413020-9	SPONGE 38.5-46	1				
060B		413020-9	SPONGE 38.5-46	1				
060-1A		423257-0	SPONGE 38.5-46	1	O	44730		
060-1B		423257-0	SPONGE 38.5-46	1	O	44730		
060-1Y		423257-0	SPONGE 38.5-46	1				
060-1Z		423257-0	SPONGE 38.5-46	1				
061		931302-2	HEX. NUT M6	1				
062A		942151-2	SPRING WASHER 6	1			C3118	
062B		942151-2	SPRING WASHER 6	1			C3118	
062Z		942151-2	SPRING WASHER 6	1				
062-1A		253428-3	SPRING WASHER 6	1	O	C3118		
062-1B		253428-3	SPRING WASHER 6	1	O	C3118		
062-1Y		253428-3	SPRING WASHER 6	1				
063		941151-9	FLAT WASHER 6	1				
064		273457-0	GRIP 32	1				
065		341922-8	GRIP BASE	1				
066		321497-3	CLAMP NUT	1				
067		341914-7	GRIP CLAMP	1				
068-3		922316-2	HEX. SOCKET HEAD BOLT M6X14	2				
070-1		343753-1	CUSHION PLATE	2				
071A		651051-2	SWITCH HPAHR6-35S	1				
073-4		265914-2	HEX. SOCKET HEAD BOLT M6X25	2				
074		911109-2	PAN HEAD SCREW M4X8	2				
075Y		645253-0	NOISE SUPPRESSOR	1				
075Z		645253-0	NOISE SUPPRESSOR	1				
076Y		685700-9	SPONGE SHEET	1				
076Z		685700-9	SPONGE SHEET	1				
077A		181816-3	HANDLE SET	1				
	D10		INC. 82					
077B		181816-3	HANDLE SET	1				
	D10		INC. 82					
077-1A		182590-6	HANDLE SET	1	O	44730		
077-1B		182590-6	HANDLE SET	1	O	44730		
077-1Y		182590-6	HANDLE SET	1				
077-1Z		182590-6	HANDLE SET	1				
	D10		INC. 82-1					
078A B		682503-2	CORD GUARD 8-90	1				115V
078A Z		682540-6	CORD GUARD 9.3-90	1			C6579	
078A1Z		682505-8	CORD GUARD 10-90	1	O	C6579		

A:HM0810(H)  
B:HM0810(L)  
Y:HM0810CE(H)  
Z:HM0810(L)

Interchange  
O : Yes  
X : No  
< : the new part can be substituted for the current.  
> : the current part can be substituted for the new.  
S : Interchangeable as a set.

HK

HONG KONG

## HM0810 / DEMOLITION HAMMER

Item	Sub	Parts No.	Parts Description	Qty	I/C	E/C No.	Close No.	Remark
078B	A	682540-6	CORD GUARD 9.3-90	1			C6579	220V
078B1A		682505-8	CORD GUARD 10-90	1	O	C6579		220V
078B1Y		682505-8	CORD GUARD 10-90	1				220V
079A	A	692541-6	POWER SUPPLY CORD 1.00-2-5.0	1				220V
079A	Y	692541-6	POWER SUPPLY CORD 1.00-2-5.0	1				220V
079H	B	660023-6	POWER SUPPLY CORD AWG#18-2-5.0	1			Z18726	115V
079H1B		660254-7	POWER SUPPLY CORD AWG#18-2-5.0	1	O	Z18726		115V
079H1Z		665937-4	POWER SUPPLY CORD 1.0-2-5.0	1				
080A	B	687002-9	STRAIN RELIEF	1				115V
080A	Z	687031-2	STRAIN RELIEF	1				
080C	A	687031-2	STRAIN RELIEF	1				220V/240V
080C	Y	687031-2	STRAIN RELIEF	1				220V/240V
081-1		911133-5	PAN HEAD SCREW M4X18	2				
082A		181816-3	HANDLE SET	1				
	D10		INC. 77					
082B		181816-3	HANDLE SET	1				
	D10		INC. 77					
082-1A		182590-6	HANDLE SET	1	O	44730		
082-1B		182590-6	HANDLE SET	1	O	44730		
082-1Y		182590-6	HANDLE SET	1				
082-1Z		182590-6	HANDLE SET	1				
	D10		INC. 77					
083		911243-8	PAN HEAD SCREW M5X25	1				
085		262051-3	RUBBER RING 9	2				
086		262052-1	RUBBER RING 9	2				
087		257636-8	SLEEVE 6	2				
088		231936-4	RING SPRING 30.5	1				
089		267112-4	FLAT WASHER 34	1				
090		233052-8	COMPRESSION SPRING 35	1				
091		267112-4	FLAT WASHER 34	1				
092		213508-7	O RING 38	1				
093A		267203-1	FLAT WASHER 43	1		58512		
093B		267203-1	FLAT WASHER 43	1		58512		
093Y		267203-1	FLAT WASHER 43	1				
093Z		267203-1	FLAT WASHER 43	1				
400B		150881-3	PLASTIC CARRYING CASE COMPLETE	1				
	C50	819140-1	MAKITA LOGO LABEL	1		68761		
	C50	819140-1	MAKITA LOGO LABEL	1		68761		
	C50	819140-1	MAKITA LOGO LABEL	1				
	C50	819140-1	MAKITA LOGO LABEL	1				
	C10	810845-6	CAUTION LABEL	1				
	C20	162202-7	LATCH	2				
	C30	416549-4	HANDLE	1				
	C40	416556-7	COVER	2				
401A		798023-7	BULL POINT 17-280	1			Y04927	
401B		798023-7	BULL POINT 17-280	1			Y04927	
401-1A		A-80450	BULL POINT 17X280	1	O	Y04927		
401-1B		A-80450	BULL POINT 17X280	1	O	Y04927		
401-1Y		A-80450	BULL POINT 17X280	1				
401-1Z		A-80450	BULL POINT 17X280	1				
404		783202-0	HEX. WRENCH 4	1				
B01		193242-4	HAMMER SERVICE KIT	1		Y08316		
	C10	181490-7	HAMMER GREASE 30G	1		Y08316	DS303	
	C11	1914C5-7	GREASE SET	1	O	DS303		
	D10		INC. 7-10,32,33,52			Y08316		
E01Z		655030-2	PLUG UK TYPE 16A-4H/110V	1			DB391	
E01-1Z		655053-0	PLUG	1	<	DB391		
E02Y		801093-8	SOUND 104DB LABEL	1			D7451	
E02Z		812R09-6	SOUND XXDB LABEL	1		B6235	B9741	
E02-1Y		804G74-3	SOUND 104DB LABEL	1	<	D7451	DG231	
E02-1Z		801093-8	SOUND 104DB LABEL	1	<	B9741	D7451	
E02-2Y		8040V6-2	SOUND LABEL	1	<	DG231		
E02-2Z		804G74-3	SOUND 104DB LABEL	1	<	D7451	DG231	
E02-3Z		8040V6-2	SOUND LABEL	1	<	DG231		
F21		1914C5-7	GREASE SET	1		DR335		

A:HM0810(H)  
B:HM0810(L)  
Y:HM0810CE(H)  
Z:HM0810(L)

Interchange  
O : Yes  
X : No  
< : the new part can be substituted for the current.  
> : the current part can be substituted for the new.  
S : Interchangeable as a set.