



HK

HONG KONG

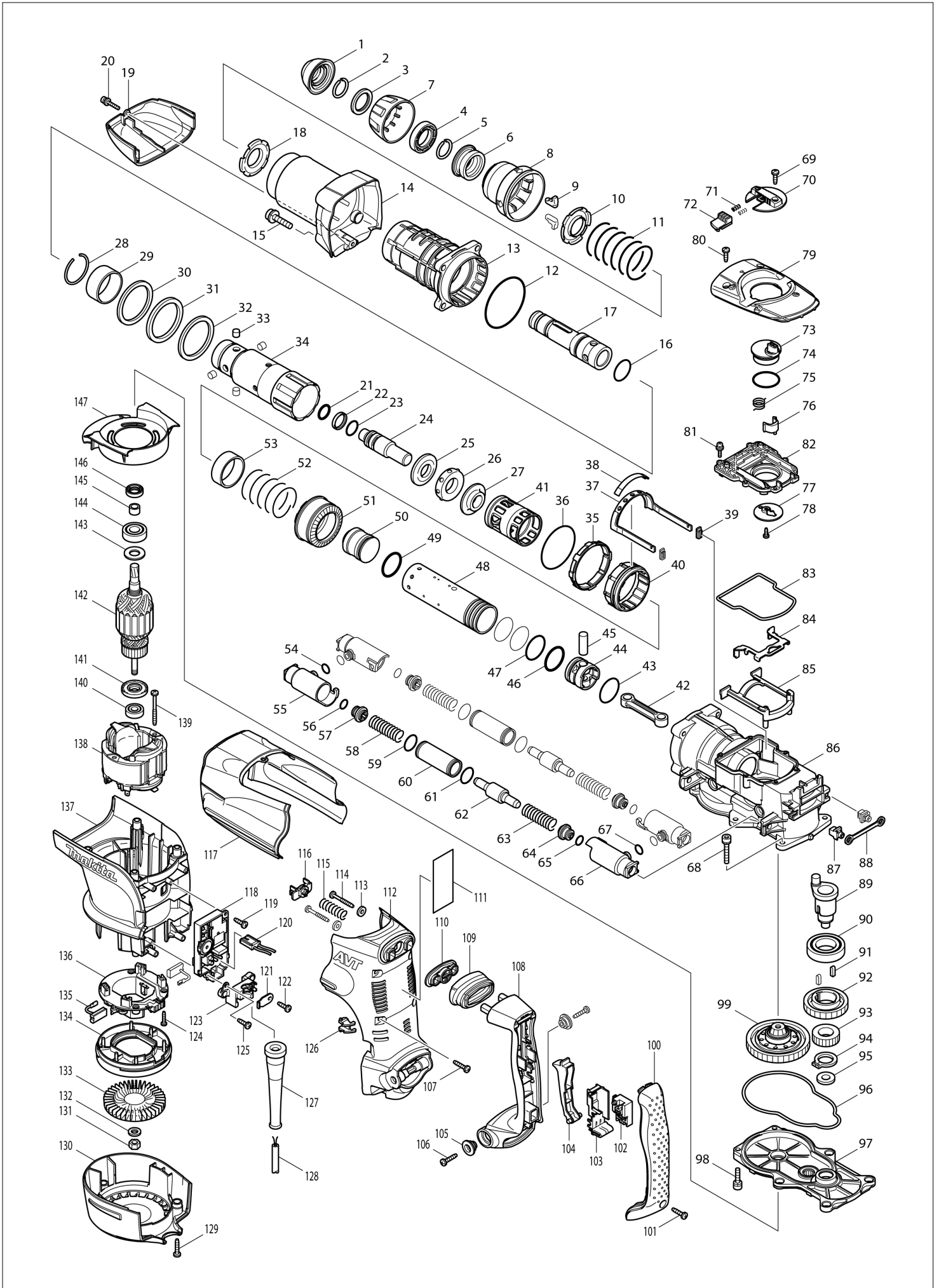
Diagram / Parts List

HR5211C

ROTARY HAMMER 52MM



(HK) HR5211C / ROTARY HAMMER 52MM



HK

HONG KONG

HR5211C / ROTARY HAMMER 52MM

Item	Sub	Parts No.	Parts Description	Qty	I/C	E/C No.	Close No.	Remark
001-1		286285-4	TOOL HOLDER CAP	1				
002		233948-3	RING SPRING 25	1				
003		257280-1	RING 28	1				
004		419002-9	SPACER	1				
005		233948-3	RING SPRING 25	1				
006		324752-2	CHUCK RING	1				
007		419778-8	CHUCK COVER	1				
008		419779-6	RELEASE COVER	1				
009		310178-4	TOOL RETAINER	2				
010		345804-6	SPRING GUIDE	1				
011		233496-2	COMPRESSION SPRING 49	1				
012		213766-5	O-RING 78	1				
013		158175-0	BARREL COMPLETE	1				
	C10	213576-0	OIL SEAL 45	1				
	C20	214657-3	PLANE BEARING 52	1				
	C30	214658-1	PLANE BEARING 57	1				
014		158179-2	BARREL COVER COMPLETE	1				
015		922456-6	HEX. SOCKET HEAD BOLT M8X35	4				
016		213492-6	O-RING 32	1				
017		324740-9	TOOL HOLDER A	1				
018		345804-6	SPRING GUIDE	1				
019		419791-6	GEAR HOUSING COVER	1				
020		922148-7	HEX. SOCKET HEAD BOLT M4X25	1				
021		213274-6	O RING 18	1				
022		213392-0	FLUORIDE RING 25	1				
023		213317-4	O RING 20	1				
024		324753-0	IMPACT BOLT	1				
025		324756-4	RING 20	1				
026		424000-0	RUBBUR RING 24	1				
027		324757-2	COLLAR SLEEVE 20	1				
028		233949-1	RING SPRING 44	1				
029		257282-7	RING 47	1				
030		267287-9	FLAT WASHER 57	1				
031		262122-6	URETAHNE RING 57	1				
032		267287-9	FLAT WASHER 57	1				
033		256265-4	PIN 10	4				
034		324741-7	TOOL HOLDER B	1				
035		419776-2	LOCK SLEEVE	1				
036		213654-6	O RING 60	1				
037		165459-9	RINK ARM	1				
038		419775-4	LINK ARM GUIDE	1				
039		424024-6	SEAL PLATE	2				
040		313138-5	DRIVING SLEEVE	1				
041-1		419780-1	SLIDE SLEEVE	1				
042-1		451516-2	CONECTING ROD	1				
043		213460-9	O RING 35	1				
044		419771-2	PISTON	1				
045		268121-6	PIN 12	1				
046-1		213296-6	O-RING 34	1				
047		213510-0	O RING 36	3				
048		331748-6	CYLINDER 40	1				
049-1		213296-6	O-RING 34	1				
050		324754-8	STRIKER	1				
051		227511-2	STRAIGHT BEVEL GEAR 33	1				
052		233498-8	COMPRESSION SPRING 46	1				
053		257281-9	RING 45	1				
054		213118-0	O RING 12	2				
055		318124-1	PIPE HOLDER	2				
056		213118-0	O RING 12	2				
057		419773-8	SPRING GUIDE	2				
058		233497-0	COMPRESSION SPRING 15	2				
059		213953-6	O RING 24	2				
060		331745-2	PIPE 22	2				
061		213953-6	O RING 24	2				
062-1		324755-6	COUNTER WEIGHT	2				

A:HR5211C(H)
B:HR5211C(L)

Interchange

O : Yes

X : No

< : the new part can be substituted for the current.

> : the current part can be substituted for the new.

S : Interchangeable as a set.

HK

HONG KONG

HR5211C / ROTARY HAMMER 52MM

Item	Sub	Parts No.	Parts Description	Qty	I/C	E/C No.	Close No.	Remark
063		233497-0	COMPRESSION SPRING 15	2				
064		419773-8	SPRING GUIDE	2				
065		213118-0	O RING 12	2				
066		318124-1	PIPE HOLDER	2				
067		213118-0	O RING 12	2				
068		922361-7	HEX. SOCKET HEAD BOLT M6X40	4				
069		266192-7	TAPPING SCREW 4X14	1				
070		419020-7	CHANGE LEVER	1				
071		233436-0	COMPRESSION SPRING 3	2				
072		419777-0	LOCK BUTTON	1				
073-1		450687-2	CRANK LEVER	1				
074-1		213534-6	O RING 36	1				
075		233506-5	TORSION SPRING 16	1				
076		310207-3	LINK LEVER	1				
077		345778-1	RETAINER PLATE	1				
078-1		265014-8	+ PAN HEAD SCREW M4X12	1				
079		318129-1	CRANK CAP COVER	1				
080		266192-7	TAPPING SCREW 4X14	2				
081		911133-5	PAN HEAD SCREW M4X18	6				
082		419789-3	CRANK CAP	1				
083		421998-2	SEAL RING	1				
084		345779-9	LINK PLATE	1				
085		419781-9	LINK PLATE GUIDE	1				
086		158176-8	CRANK HOUSING COMPLETE	1				
087		419008-7	FIX GUIDE	2				
088		423366-5	CUSHION PLATE	1				
089		324739-4	CRANK SHAFT	1				
090		211418-2	BALL BEARING 6006LLU	1				
091		254229-2	KEY 5	2				
092		226646-6	HELICAL GEAR 47	1				
093		227176-0	SPUR GEAR 24	1				
094		961102-6	RETAINING RING S-22	1				
095		253843-1	FLAT WASHER 12	1				
096		421999-0	SEAL RING	1				
097		158178-4	GEAR HOUSING COMPLETE	1				
098		922341-3	HEX. SOCKET HEAD BOLT M6X25	2				
099		125374-9	TORQUE LIMITER ASS'Y	1				
100		419796-6	HANDLE COVER	1				
101		265995-6	TAPPING SCREW 4X18	1				
102A		650567-4	SWITCH TG73B-1	1			96540	
102-1A		650676-9	SWITCH C3PA-1111	1	<	96540		
102-1B		650676-9	SWITCH C3PA-1111	1				
103		154626-1	SWITCH HOLDER COMPLETE	1				
104		419025-7	SWITCH LEVER	1				
105		313124-6	SHOULDER SLEEVE 6	2				
106		266041-8	TAPPING SCREW 5X25	2				
107		266041-8	TAPPING SCREW 5X25	6				
108		419798-2	HANDLE	1				
109		424001-8	DUST COVER	1				
110		419783-5	DUST COVER SUPPORT	1				
111		863353-6	HR5211C NAME PLATE	1				
112		419797-4	HANDLE BASE	1				
113		253807-5	FLAT WASHER 5	2				
114		266211-9	TAPPING SCREW 5X40	2				
115		233434-4	COMPRESSION SPRING 11	1				
116		419013-4	SPRING GUIDE	1				
117		140528-7	CRANK HOUSING COVER COMPLETE	1			DG914	
	C10	810711-7	CAUTION LABEL	1			DG914	
117-1		419793-2	CRANK HOUSING COVER	1	O	DG914		
118A		631727-7	CONTROLLER	1				220-240V
118B		631726-9	CONTROLLER	1				110-120V
119		266192-7	TAPPING SCREW 4X14	1			A2782	
119-1		266901-4	TAPPING SCREW 4X14	1	<	A2782		
120		638510-3	LEAD UNIT	1				
121		687169-3	STRAIN RELIEF	1				

A:HR5211C(H)
B:HR5211C(L)

Interchange

O : Yes

X : No

< : the new part can be substituted for the current.

> : the current part can be substituted for the new.

S : Interchangeable as a set.

HK

HONG KONG

HR5211C / ROTARY HAMMER 52MM

Item	Sub	Parts No.	Parts Description	Qty	I/C	E/C No.	Close No.	Remark
122		266192-7	TAPPING SCREW 4X14	1				
123		419024-9	CORD CLAMP BASE	1				
124		265995-6	TAPPING SCREW 4X18	4				
125		266192-7	TAPPING SCREW 4X14	1			A2782	
125-1		266901-4	TAPPING SCREW 4X14	1	<	A2782		
126		419774-6	LENS	1				
127		682560-0	CORD GUARD 10	1				
128A		692623-4	POWER SUPPLY CORD 1.5-2-4.0	1				220-240V
128B		664471-1	POWER SUPPLY CORD AWG 14-2-5.0	1				110-120V
129		266041-8	TAPPING SCREW 5X25	3				
130		419790-8	REAR COVER	1				
131		252178-7	HEX. NUT M8-12	1				
132		253165-9	FLAT WASHER 8	1				
133		240016-5	FAN 90	1				
134		419782-7	FAN GUIDE	1				
135A		194412-8	CARBON BRUSH CB-171	1			92823	
135-1A		195844-2	CARBON BRUSH CB-175	1	O	92823		
135-1B		195844-2	CARBON BRUSH CB-175	1				
136		638447-4	BRUSH HOLDER UNIT	1			A4072	
136-1		632D00-2	BRUSH HOLDER UNIT	1	<	A4072		
137		419795-8	MOTOR HOUSING	1				
138A		636303-2	FIELD 220-240V	1				220-240V
138B		636301-6	FIELD 115V	1				110-120V
139		266095-5	TAPPING SCREW 5X55	2				
140		210059-1	BALL BEARING 6000DDW	1				
141		681642-5	INSULATION WASHER	1				
142A		516993-6	ARMATURE ASS'Y 220-240V	1				220-240V
142B		516990-2	ARMATURE ASS'Y 100-115V	1				110-120V
	D10		INC. 140,141,145					
143		267025-9	FLAT WASHER 15	1				
144		211238-4	BALL BEARING 6202LLU	1				
145		331596-3	SLEEVE 12	1				
146		213231-4	OIL SEAL 15	1				
147		419788-5	BAFFLE PLATE	1				
A01		158131-0	GRIP 36 COMPLETE	1				
A02		158273-0	PLASTIC CARRYING CASE COMPLETE	1			DF409	
	C10	163467-4	LATCH	2			DF409	
	C20	816879-7	INDICATION LABEL	1			DF409	
A02-1		824801-0	PLASTIC CASE	1	O	DF409	DK941	
	C10	163467-4	LATCH	2		DF409	DK941	
A02-2		824791-7	PLASTIC CASE	1	O	DK941		
	C10	163467-4	LATCH	2		DK941		
A03-1		194683-7	GREASE VESSEL SET	1				
A04-1		135269-8	SIDE HANDLE 82 ASS'Y	1				
	C10	252640-2	WING NUT M8	1				
	C20	265439-6	HEX. BOLT M8X150	1				
	C30	318505-9	SIDE HANDLE BASE 82A	1				
	C40	318506-7	SIDE HANDLE BASE 82B	1				
	C50	417002-3	SIDE HANDLE CAM	2				
	C60	417003-1	SIDE HANDLE	1				
	C70	951166-8	SPRING PIN 5-24	1				
A05		265701-9	THUMB SCREW M6X14	1				
A06		266163-4	CUP SQUARE NECK BOLT M8X80	1				
A07		321248-4	DEPTH GAUGE	1				
A08		344492-6	PLATE	1				
A09		345780-4	GRIP SPRING 82	1				
A10		419792-4	SIDE GRIP BASE 82	1				
A11		443122-7	CLOTH	1			DW146	
A12		931302-2	HEX. NUT M6	1				
A13		805238-0	HR5211C MODEL NO. LABEL	1				
A15		135380-6	GRIP 36 ASSY	1		Y05516		
	D10		INC. A01,A05-A10,A12			Y05516		
F03-1		199143-4	DUST EXTRACTOR ATT SET(EU)	1	<	C1783		
F04-1		199143-4	DUST EXTRACTOR ATT SET(EU)	1	<	C1783		
F06-1		199144-2	DUST EXTRACTOR ATT SET(EU)	1	<	C1783		

A:HR5211C(H)
B:HR5211C(L)Interchange
O : Yes
X : No
< : the new part can be substituted for the current.
> : the current part can be substituted for the new.
S : Interchangeable as a set.

