



HK	HONG KONG
----	-----------

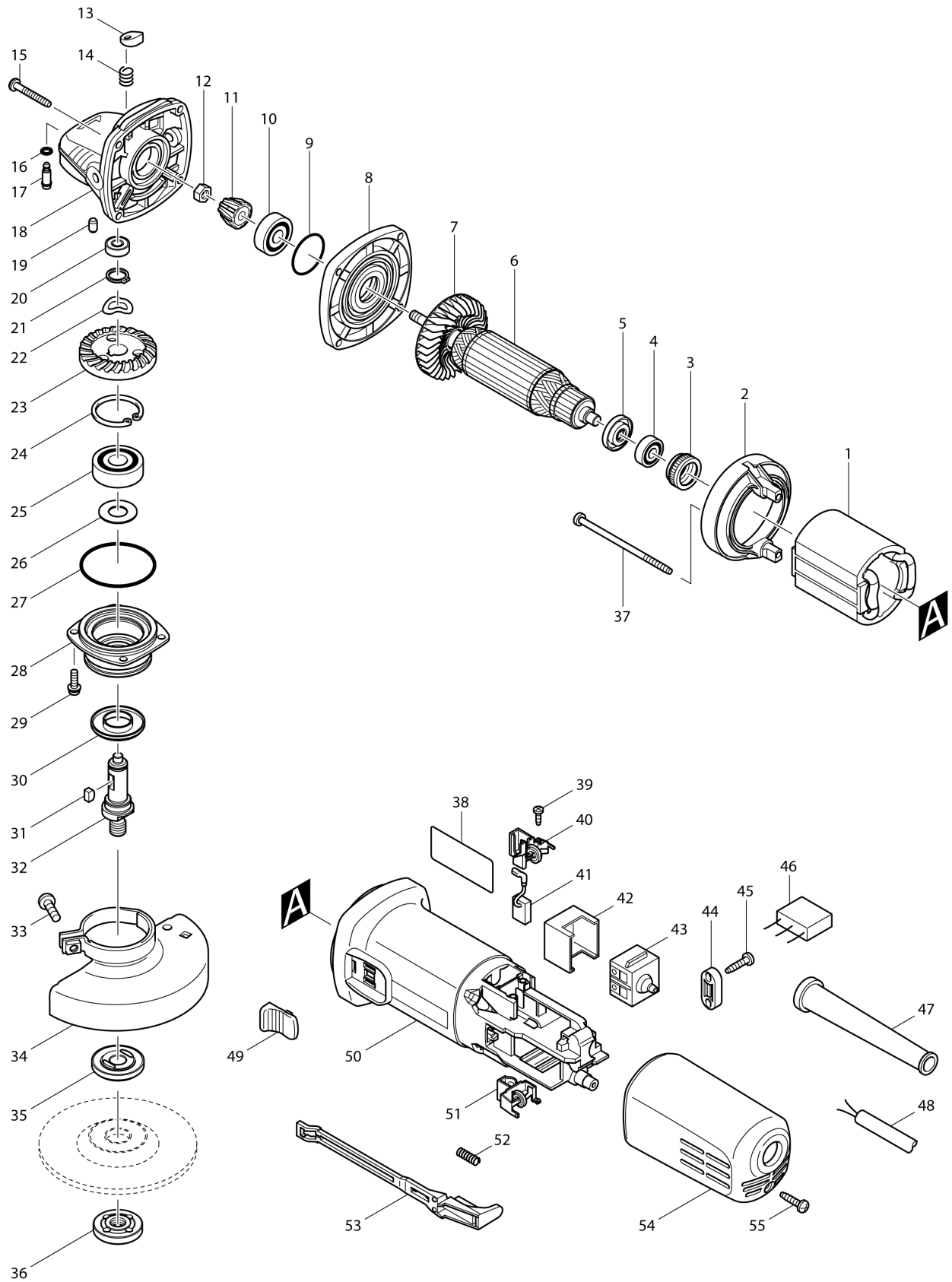
Diagram / Parts List

9556NB

100MM ANGLE GRINDER



(HK) 9556NB / 100MM ANGLE GRINDER



HK

HONG KONG

9556NB / 100MM ANGLE GRINDER

Item	Sub	Parts No.	Parts Description	Qty	I/C	E/C No.	Close No.	Remark
001		621708-9	FIELD 220-240V	1			DA936	
001-1		621998-4	FIELD	1	O	DA936	DL747	
001-2		621708-9	FIELD 220-240V	1	O	DL747	DW495	
001-3		621708-9	FIELD 220-240V	1	O	DW495		
002		418770-1	BAFFLE PLATE	1			B9212	
002-1		457791-8	BAFFLE PLATE	1	<	B9212		
003		421868-5	LABYRINTH RUBBER RING 19	1			DD769	
003-1		422768-2	LABYRINTH RUBBER RING19	1	<	DD769		
004		210034-7	BALL BEARING 607LLB	1				
005		681667-9	RESIN WASHER	1			72864	
005-1		681636-0	INSULATION WASHER	1	O	72864		
006		518870-8	ARMATURE ASS'Y 220-240V	1			DR676	
	D10		INC. 4,5,7				DR676	
006-1		515613-9	ARMATURE ASS'Y 220-240V	1	O	DR676		
	D10		INC. 4,5,7			DR676		
007		240076-7	FAN 56	1				
008		317821-6	GEAR HOUSING COVER	1				
009		213445-5	O-RING 26	1				
010		210071-1	BALL BEARING 629LLB	1			74229	
010-1		210053-3	BALL BEARING 629LLB	1	<	74229	76219	
010-2		210042-8	BALL BEARING 629LLB	1	O	76219		
011		227464-5	SPIRAL BEVEL GEAR 10	1			C6204	
011-1		227541-3	SPIRAL BEVEL GEAR 10	1	S	C6204	Y09469	
011-2		227464-5	SPIRAL BEVEL GEAR 10	1	S	Y09469		
012		252186-8	HEX. NUT M6	1				
013		417771-6	PIN CAP	1				
014		233376-2	COMPRESSION SPRING 8	1				
015		266361-0	TAPPING SCREW 4X30	4				
016		213960-9	O RING 5	1				
017		256486-8	SHOULDER PIN 4	1				
018		317814-3	GEAR HOUSING	1			C6893	
018-1		318051-2	GEAR HOUSING	1	O	C6893		
019		263002-9	RUBBER PIN 4	1				
020		210033-9	BALL BEARING 696ZZ	1				
021		961052-5	RETAINING RING (EXT) S-12	1				
022		267794-2	WAVE WASHER 12	1				
023		227465-3	SPIRAL BEVEL GEAR 37	1			76502	
023-1		227505-7	SPIRAL BEVEL GEAR 37	1	<	76502	C6204	
023-2		227542-1	SPIRAL BEVEL GEAR 37	1	S	C6204	Y09469	
023-3		227505-7	SPIRAL BEVEL GEAR 37	1	S	Y09469		
024		962151-6	RETAINING RING R-32	1				
025		211129-9	BALL BEARING 6201DDW	1				
026		267238-2	FLAT WASHER 12	1				
027		213622-9	O RING 45	1				
028		317819-3	BEARING BOX	1				
029		265099-4	PAN HEAD SCREW M4X14	4				
030		345464-4	LABYRINTH RING	1				
031		254011-9	WOODRUFF KEY 4	1				
032		324488-3	SPINDLE	1				
033		265103-9	PAN HEAD SCREW M5X14	1				
034		125266-2	WHEEL COVER 100 ASSEMBLY	1			B6931	
	D10		INC. 33				B6931	
034-1		125266-2	WHEEL COVER 100 ASSEMBLY	1	O	B6931		
	D10		INC. 33			B6931		
035		224314-5	INNER FLANGE 30	1			DW544	
035-1		224491-3	INNER FLANGE 29	1	O	DW544		
036		224559-5	LOCK NUT 10-30	1			DU086	
036-1		224610-1	LOCK NUT 10-29	1	O	DU086		
037		266345-8	TAPPING SCREW 4X80	2				
038		861251-8	NAME PLATE 9556NB	1				
039		266007-8	TAPPING SCREW BIND PT 3X10	4				
040		643760-7	BRUSH HOLDER	1				
041		194074-2	CARBON BRUSH CB-325	1				
042		418729-8	SPACER	1				
043		650560-8	SWITCH DPX-2110-R	1			93182	

A:9556NB(H)

Interchange

O : Yes

X : No

< : the new part can be substituted for the current.

> : the current part can be substituted for the new.

S : Interchangeable as a set.

