



HK

HONG KONG

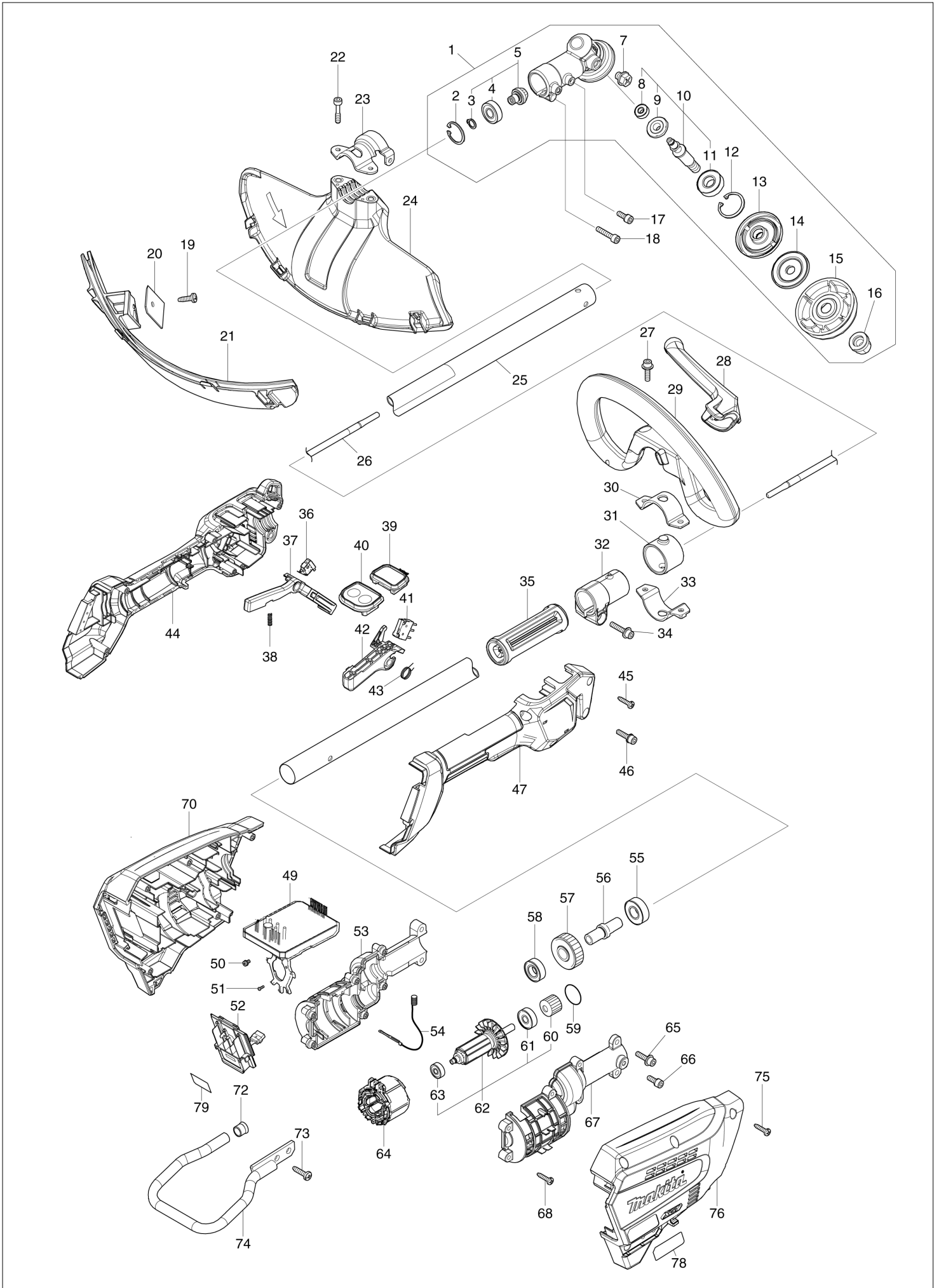
# Diagram / Parts List

**UR017G**

**CORDLESS GRASS TRIMMER**



# (HK) UR017G / CORDLESS GRASS TRIMMER



HK

HONG KONG

## UR017G / CORDLESS GRASS TRIMMER

Item	Sub	Parts No.	Parts Description	Qty	I/C	E/C No.	Close No.	Remark
001		126840-9	GEAR CASE ASSEMBLY G	1				
	D10		INC. 2,5,7,10,12-16					
002		259072-4	RETAINING RING (INT)R-24	1				
003		259071-6	RETAINING RING (EXT) S-9	1				
004		210157-1	BALL BEARING 609ZZ	1				
005		136949-9	SPIRAL BEVEL GEAR 14 ASSEMBLY	1				
	D10		INC. 3,4					
007		265590-2	+HEX.BOLT M8X10 WITH R	1				
008		210180-6	BALL BEARING 696ZZ	1				
009		226184-8	SPIRAL BEVEL GEAR 19	1				
010		136973-2	CUTTER SHAFT G ASSEMBLY	1				
	D10		INC. 8,9,11					
011		211138-8	BALL BEARING 6001LLU	1				
012		257456-0	RETAINING RING (INT)R-28	1				
013		140A87-7	RECEIVE WASHER COMPLETE	1				
014		347766-4	CLAMP WASHER US	1				
015		413201-5	CUP US	1				
016		252236-9	HEX. LOCK NUT M10-17	1				
017		922216-6	H.S.H.BOLT M5X14 WITH W	2				
018		922242-5	HEX. SOCKET HEAD BOLT M5X25	1				
019		266388-0	TAPPING SCREW 5X16	1				
020		347115-5	CUTTER	1				
021		140X35-4	PROTECTOR U EXT. 300-330 COMP	1				
022		251513-6	H.S.H.BOLT M5X25	2				
023		347107-4	PROTECTOR CLAMP 24	1				
024		412969-0	PROTECTOR U 330	1				
025		141N92-5	SHAFT PIPE COMPLETE I	1				
	C10	819312-8	MAKITA LOGO LABEL	1				
	C20	8040V7-0	CAUTION LABEL	1				
026		327B90-3	SHAFT	1				
027		922234-4	H.S.H.BOLT M5X20 WITH WG	2				
028		144315-6	BARRIER COMPLETE	1				
	C10	911128-8	P.H.SCREW M4X16 WITH WR	1				
029		457267-5	LOOP HANDLE	1				
	C10	263005-3	RUBBER PIN 6	1				
030		347113-9	UPPER CLAMP 35	1				
031		424942-8	DAMPER	1				
032		457269-1	PIPE HOLDER 24	1				
033		347114-7	LOWER CLAMP 35	1				
034		922244-1	H.S.H.BOLT M5X25 WITH WG	1				
035		451601-1	SPACER 24	1				
036		632U36-3	SWITCH UNIT	1				
037		459759-0	LOCK OFF LEVER	1				
038		233101-1	COMPRESSION SPRING 4	1				
039		141D26-8	INDICATION CIRCUIT COMPLETE G	1				
040		140W06-5	SWITCH CIRCUIT COMPLETE G	1				
	C10	819J26-9	SWITCH LABEL	1				
041		632U35-5	SWITCH UNIT	1				
042		413P50-6	SWITCH LEVER	1				
043		233622-3	TORSION SPRING 12	1				
044		183X78-3	GRIP SET	1				
	D10		INC. 47					
045		266326-2	TAPPING SCREW 4X18	5				
046		922233-6	H.S.H.BOLT M5X20 WITH WR	1				
047		183X78-3	GRIP SET	1				
	D10		INC. 44					
049		620L56-5	CONTROLLER	1				
050		652069-6	FLAT HEAD SCREW M3X6	3				
051		266490-9	TAPPING SCREW PT 2X6	3				
052		632P76-1	TERMINAL UNIT	1				
053		183X80-6	MOTOR HOUSING SET	1				
	C10	931202-6	HEX. NUT M5	2				
	D10		INC. 67					
054		632R79-7	LEAD UNIT	1				
055		210244-6	BALL BEARING 6001ZZ	1				

Z:UR017GZ(N)

Interchange

O : Yes

X : No

&lt; : the new part can be substituted for the current.

&gt; : the current part can be substituted for the new.

S : Interchangeable as a set.

