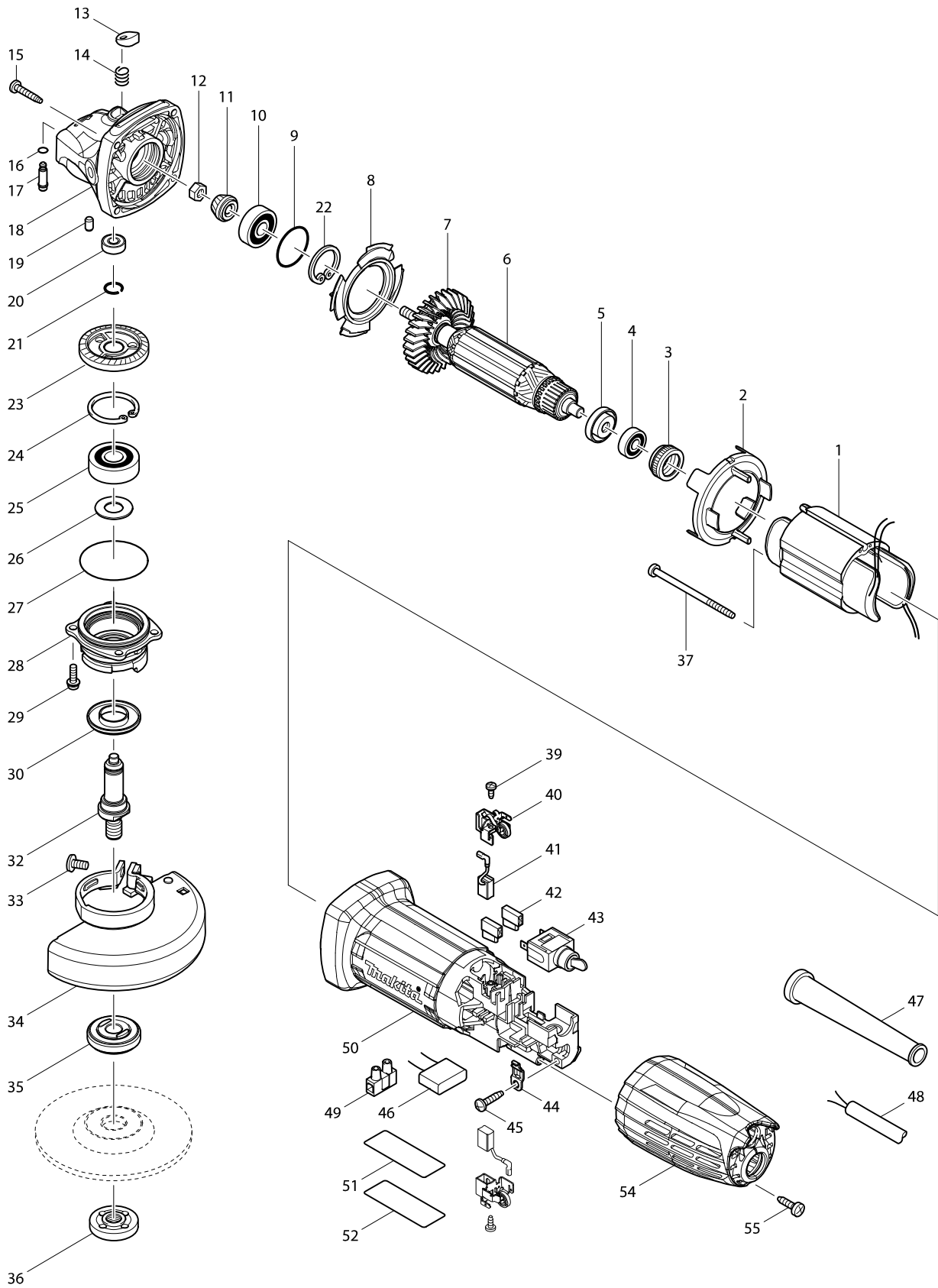


Model No. GA4031 100MM ANGLE GRINDER



Model No. GA4031 100MM ANGLE GRINDER

Item	Parts No.	Description	I/C	Qty	N/O	Sales	Purch.	Note
001A	623538-4	FIELD 220-240V		1				
001B	623536-8	FIELD 115V		1	*			
001-1B	633876-6	FIELD 115V	O	1				
002	450796-7	BAFFLE PLATE		1				
003	421868-5	LABYRINTH RUBBER RING 19		1				
004	211021-9	BALL BEARING 607LLB		1				
005	681636-0	INSULATION WASHER		1				
D10		INC. 4,5,7						
006A	510140-1	ARMATURE ASS'Y 220V		1				
006B	510138-8	ARMATURE ASS'Y 115V		1				
007	240107-2	FAN 56		1	*			
007-1	240139-9	FAN 56	O	1				
008	413126-3	GUIDE PLATE		1				
009	213445-5	O-RING 26		1				
010	211092-6	BALL BEARING 629DDW		1				
011	227545-5	SPIRAL BEVEL GEAR 10		1				
012	252186-8	HEX. NUT M6		1				
013	417771-6	PIN CAP		1				
014	234057-1	COMPRESSION SPRING 8		1				
015	266324-6	TAPPING SCREW 4X22		4				
016	213960-9	O RING 5		1	*			
016-1	213032-0	O RING 4	<	1				
017	256510-7	SHOULDER PIN 4		1				
018	318335-8	GEAR HOUSING		1				
019	263002-9	RUBBER PIN 4		1				
020	210006-2	BALL BEARING 696ZZ		1				
021	233950-6	RING SPRING 11		1				
022	962105-3	RETAINING RING R-26		1				
023	227546-3	SPIRAL BEVEL GEAR 37		1				
024	962151-6	RETAINING RING R-32		1				
025	211129-9	BALL BEARING 6201DDW		1				
026	267113-2	FLAT WASHER 12		1				
027	213561-3	O RING 42		1				
028	318336-6	BEARING BOX		1				
029	265099-4	PAN HEAD SCREW M4X14		4				
030	345464-4	LABYRINTH RING		1				
032	324956-6	SPINDLE		1				
033	265180-1	PAN HEAD SCREW M5X16		1				
034	122885-5	WHEEL COVER 100K ASS'Y		1	*			
C10	213009-5	O RING 4		1	*			
D10		INC. 33			*			
034-1	125885-4	WHEEL COVER 100AK ASS'Y	<	1				
C10	213009-5	O RING 4		1				
D10		INC. 33						
035	224314-5	INNER FLANGE 30		1				
036	224559-5	LOCK NUT 10-30		1				
037	266325-4	TAPPING SCREW 4X70		2				
039	266492-5	TAPPING SCREW 3X8		2				

